

Active Recombinant Mouse Cxcl1 protein, His-tagged

Cat. No. Cxcl1-7216M **Lot. No.** (See product label)

SPECIFICATION

Product Overview	Active Recombinant Mouse Cxcl1 protein(P12850)(25~96 aa), fused with N-terminal His tag, was expressed in E.coli.
Species	Mouse
Source	E.coli
ProteinLength	25-96 aa
Form	Lyophilized from sterile PBS, pH7.4, containing 0.01% SKL, 1mM DTT, 5% Trehalose and Proclin300.
Bio-activity	Neutrophil Activating Protein 3 (NAP3), also known as chemokine (C-X-C motif) ligand 1 (CXCL1) is a small cytokine belonging to the CXC chemokine family. NAP3 plays a role in spinal cord development by inhibiting the migration of oligodendrocyte precursors and is involved in the processes of angiogenesis, arteriogenesis, inflammation, wound healing, and tumorigenesis. Thus, chemotaxis assay used 24-well microchemotaxis system was undertaken to detect the chemotactic effect of NAP3 on the human monocytic cell line THP-1. Briefly, THP-1 cells were seeded into the upper chambers (100uL cell suspension, 5×10 ⁵ cells/ml in RPMI 1640 with FBS free) and recombinant human NAP3 (0.01ng/mL, 0.1ng/mL, 1ng/mL, 10ng/mL, 100ng/mL, 1000ng/mL diluted separately in serum free RPMI 1640) was added in lower chamber with a polycarbonate filter (8um pore size) used to separate the two compartments. After incubation at 37°C with 5% CO ₂ for 1h, the filter was removed,

 Tel: 1-631-559-9269 1-516-512-3133

 Email: info@creative-biomart.com  Fax: 1-631-938-8127

 45-1 Ramsey Road, Shirley, NY 11967, USA

then cells in low chamber were observed by inverted microscope at low magnification (×100) and the number of migrated cells were counted at high magnification (×200) randomly (five fields for each filter). Result shows recombinant human NAP3 is able to induce migration of THP-1 cells. The migrated THP-1 cells in low chamber at low magnification(×100) were shown. Five fields of each chamber were randomly chosen, and the migrated cells were counted at high magnification(×200). The optimum chemotaxis of NAP3 occurs at 0.1~1ng/mL.

Molecular Mass 11.5kDa

Purity > 97% as determined by SDS-PAGE.

Storage Avoid repeated freeze/thaw cycles. Store at -20°C for 12 months. Aliquot and store at -80°C for 12 months.

Reconstitution Reconstitute in 10mM PBS (pH7.4) to a concentration of 0.1-1.0 mg/mL. Do not vortex.

GENE INFORMATION

Gene Name [Cxcl1 chemokine \(C-X-C motif\) ligand 1 \[Mus musculus \]](#)

Official Symbol [Cxcl1](#)

Synonyms CXCL1; chemokine (C-X-C motif) ligand 1; growth-regulated alpha protein; KC/GR)-alpha; KC/GRO-alpha; GRO1 oncogene; secretory protein N51; C-X-C motif chemokine 1; platelet-derived growth factor-inducible protein KC; KC; Fsp; N51; gro; Gro1; Mgsa; Scyb1;

Gene ID [14825](#)

 Tel: 1-631-559-9269 1-516-512-3133

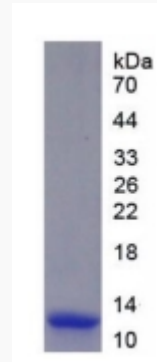
 Email: info@creative-biomart.com  Fax: 1-631-938-8127

 45-1 Ramsey Road, Shirley, NY 11967, USA

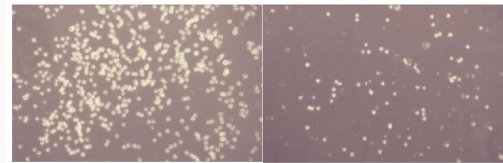
mRNA Refseq [NM_008176](#)

Protein Refseq [NP_032202](#)

SDS-PAGE



Activity



 Tel: 1-631-559-9269 1-516-512-3133

 Email: info@creative-biomart.com  Fax: 1-631-938-8127

 45-1 Ramsey Road, Shirley, NY 11967, USA