

Recombinant Mouse Cxcl1 protein, His & T7-tagged

Cat. No. Cxcl1-770M **Lot. No.** (See product label)

SPECIFICATION

Product Overview	Recombinant Mouse Cxcl1 aa. (Ala25~Lys96 (Accession # P12850)) fused with N-terminal His & T7 tag was produced in E. coli cells.
Species	Mouse
Source	E.coli
ProteinLength	Ala25~Lys96
Description	This gene encodes a protein that is a member of the CXC subfamily of chemokines. Chemokines, which recruit and activate leukocytes, are classified by function (inflammatory or homeostatic) or by structure. This secretory protein is proposed to bind the G-protein coupled receptor chemokine (C-X-C motif) receptor 2 to recruit neutrophils. In mouse, deficiency of this gene is associated with colitis and with defects in immune cell recruitment to the lung.
Form	Freeze-dried powder
Molecular Mass	Predicted Molecular Mass: 11.6kDa
Endotoxin	<1.0EU per 1g (determined by the LAL method)
Purity	> 95%
Characteristic	The isoelectric point is 9.3.

 Tel: 1-631-559-9269 1-516-512-3133

 Email: info@creative-biomart.com  Fax: 1-631-938-8127

 45-1 Ramsey Road, Shirley, NY 11967, USA

Applications	SDS-PAGE; WB; ELISA; IP
Stability	The thermal stability is described by the loss rate. The loss rate was determined by accelerated thermal degradation test, that is, incubate the protein at 37°C for 48h, and no obvious degradation and precipitation were observed. The loss rate is less than 5% within the expiration date under appropriate storage condition.
Storage	Avoid repeated freeze/thaw cycles. Store at 2-8°C for one month. Aliquot and store at -80°C for 12 months.
Storage buffer	Supplied as lyophilized form in PBS, pH7.4, containing 5% trehalose, 0.01% sarcosyl
Reconstitution	Reconstitute in sterile PBS, pH7.2-pH7.4

GENE INFORMATION

Gene Name	Cxcl1 chemokine (C-X-C motif) ligand 1 [Mus musculus (house mouse)]
Official Symbol	Cxcl1
Synonyms	Cxcl1; chemokine (C-X-C motif) ligand 1; KC; Fsp; N51; gro; Gro1; Mgsa; Scyb1; growth-regulated alpha protein; C-X-C motif chemokine 1; GRO1 oncogene; KC/GR)-alpha; KC/GRO-alpha; alpha-chemokine; platelet-derived growth factor-inducible protein KC; secretory protein N51
Gene ID	14825
mRNA Refseq	NM_008176.3
Protein Refseq	NP_032202.1

 Tel: 1-631-559-9269 1-516-512-3133

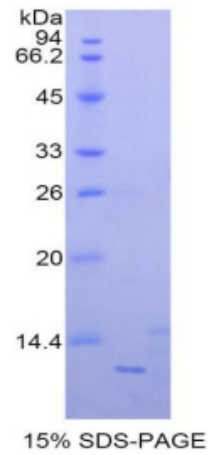
 Email: info@creative-biomart.com  Fax: 1-631-938-8127

 45-1 Ramsey Road, Shirley, NY 11967, USA

UniProt ID

P12850

SDS-PAGE



 Tel: 1-631-559-9269 1-516-512-3133

 Email: info@creative-biomart.com  Fax: 1-631-938-8127

 45-1 Ramsey Road, Shirley, NY 11967, USA