

Active Recombinant Mouse Cxcl1 protein, His-GST-tagged

Cat. No. Cxcl1-771M **Lot. No.** (See product label)

SPECIFICATION

Product Overview	Active Recombinant Mouse Cxcl1 protein(P12850)(25~96 aa), fused with N-terminal His tag and GST tag, was expressed in E.coli.
Species	Mouse
Source	E.coli
ProteinLength	25-96 aa
Form	Lyophilized from sterile PBS, pH7.4, containing 0.01% SKL, 1mM DTT, 5% Trehalose and Proclin300.
Bio-activity	Neutrophil-activating protein 3 (NAP3) also known as chemokine (C-X-C motif) ligand 1 (CXCL1) is a small cytokine belonging to the CXC chemokine family. NAP3 is expressed by macrophages, neutrophils and epithelial cells, and has neutrophil chemoattractant activity. Thus, chemotaxis assay used 24-well microchemotaxis system was undertaken to detect the chemotactic effect of NAP3 on THP-1 the human monocytic cell line. Briefly, THP-1 cells were seeded into the upper chambers (150 ul cell suspension, 10 ⁶ cells/ml in RPMI 1640 with FBS free) and different concentrations of recombinant mouse NAP3 diluted with serum free RPMI 1640 was added in lower chamber with a polycarbonate filter (8 um pore size) used to separate the two compartments. After incubation at 37°C with 5% CO ₂ for 1h, the filter was removed, then cells in low chamber were observed by inverted microscope at low magnification (×100) and the number of migrated cells were counted at high

 Tel: 1-631-559-9269 1-516-512-3133

 Email: info@creative-biomart.com  Fax: 1-631-938-8127

 45-1 Ramsey Road, Shirley, NY 11967, USA

magnification(×400) randomly (five fields for each filter). Result shows recombinant mouse NAP3 is able to induce migration of THP-1 cells. The migrated THP-1 cells in low chamber at low magnification (×100) were shown. The optimum chemotaxis of NAP3 occurs at 0.001 ng/ml.

Molecular Mass 37.9kDa

Endotoxin <1.0EU per 1µg (determined by the LAL method).

Purity > 90% as determined by SDS-PAGE.

Storage Avoid repeated freeze/thaw cycles. Store at -20°C for 12 months. Aliquot and store at -80°C for 12 months.

Reconstitution Reconstitute in 10mM PBS (pH7.4) to a concentration of 0.1-1.0 mg/mL. Do not vortex.

GENE INFORMATION

Gene Name [Cxcl1 chemokine \(C-X-C motif\) ligand 1 \[Mus musculus \]](#)

Official Symbol [Cxcl1](#)

Synonyms CXCL1; chemokine (C-X-C motif) ligand 1; growth-regulated alpha protein; KC/GR)-alpha; KC/GRO-alpha; GRO1 oncogene; secretory protein N51; C-X-C motif chemokine 1; platelet-derived growth factor-inducible protein KC; KC; Fsp; N51; gro; Gro1; Mgsa; Scyb1;

Gene ID [14825](#)

mRNA Refseq [NM_008176](#)

 Tel: 1-631-559-9269 1-516-512-3133

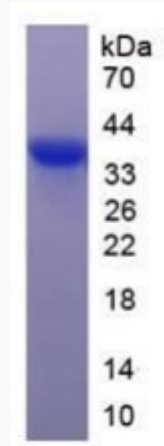
 Email: info@creative-biomart.com  Fax: 1-631-938-8127

 45-1 Ramsey Road, Shirley, NY 11967, USA

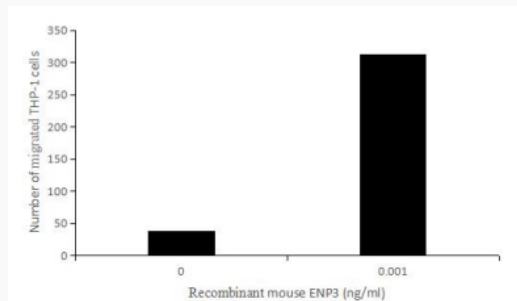
Protein Refseq

NP_032202

SDS-PAGE



Activity



 Tel: 1-631-559-9269 1-516-512-3133

 Email: info@creative-biomart.com  Fax: 1-631-938-8127

 45-1 Ramsey Road, Shirley, NY 11967, USA