

Recombinant Mouse Cxcl1 protein

Cat. No. Cxcl1-96M **Lot. No.** (See product label)

SPECIFICATION

Product Overview	Recombinant Mouse Cxcl1 protein was expressed in Escherichia coli.
Species	Mouse
Source	E.coli
ProteinLength	72
Description	<p>Murine CXCL1, also known as KC, is belonging to the CXC chemokine family. It is encoded by the GRO gene now designated CXCL1. The gene for CXCL1 was initially discovered in mouse fibroblasts by platelet-derived growth factor. KC is member of the intercrine alpha (chemokine C-X-C) subfamily of chemokines. It is secreted by human melanoma cells, and also expressed by macrophages, neutrophils and epithelial cells. The functional receptor for CXCL1 has been identified as CXCR2. CXCL1 has chemotactic activity for neutrophils, and plays a role in inflammation and wound healing. Amino acid sequence of murine CXCL1 is approximately 60 % identical to the human CXCL1. KC was found to be involved in monocyte arrest on atherosclerotic endothelium and may also play a pathophysiological role in Alzheimer's disease.</p>
Form	Lyophilized from a 0.2µm filtered concentrated solution in PBS, pH 7.4.
Bio-activity	Fully biologically active when compared to standard. The biological activity determined by a chemotaxis bioassay using human peripheral blood neutrophils is in a concentration range of 10-100 ng/ml.

 Tel: 1-631-559-9269 1-516-512-3133

 Email: info@creative-biomart.com  Fax: 1-631-938-8127

 45-1 Ramsey Road, Shirley, NY 11967, USA

Molecular Mass	Approximately 7.8 kDa, a single non-glycosylated polypeptide chain containing 72 amino acid residues.
AA Sequence	APIANELRCQCLQTMAGIHLKNIQSLKVLPSGPHCTQTEVIATLKNGREACLDPEAPL VQKIVQKMLKGVPK
Endotoxin	Less than 1 EU/μg of rMuKC/CXCL1 as determined by LAL method.
Purity	>97% by SDS-PAGE and HPLC analysis.
Storage	Use a manual defrost freezer and avoid repeated freeze-thaw cycles. 12 months from date of receipt, -20 to -70 centigrade as supplied. 1 month, 2 to 8 centigrade under sterile conditions after reconstitution. 3 months, -20 to -70 centigrade under sterile conditions after reconstitution.
Reconstitution	We recommend that this vial be briefly centrifuged prior to opening to bring the contents to the bottom. Reconstitute in sterile distilled water or aqueous buffer containing 0.1 % BSA to a concentration of 0.1-1.0 mg/mL. Stock solutions should be apportioned into working aliquots and stored at ≤-20 centigrade. Further dilutions should be made in appropriate buffered solutions.

GENE INFORMATION

Gene Name	Cxcl1
Official Symbol	Cxcl1
Synonyms	CXCL1; chemokine (C-X-C motif) ligand 1; growth-regulated alpha protein; KC/GR)-alpha; KC/GRO-alpha; GRO1 oncogene; secretory protein N51; C-X-C motif chemokine 1; platelet-derived growth factor-inducible protein KC; KC; Fsp; N51; gro; Gro1; Mgsa; Scyb1;

 Tel: 1-631-559-9269 1-516-512-3133

 Email: info@creative-biomart.com  Fax: 1-631-938-8127

 45-1 Ramsey Road, Shirley, NY 11967, USA

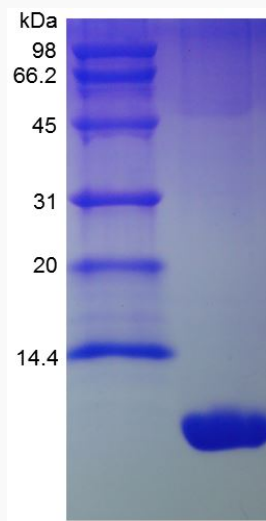
Gene ID 14825

mRNA Refseq NM_008176

Protein Refseq NP_032202

UniProt ID P12850

SDS-PAGE of Cxcl1-
96M



 Tel: 1-631-559-9269 1-516-512-3133

 Email: info@creative-biomart.com  Fax: 1-631-938-8127

 45-1 Ramsey Road, Shirley, NY 11967, USA