

# Active GMP Recombinant Mouse Cxcl10 Protein, His-Tagged

**Cat. No.** Cxcl10-01M    **Lot. No.** (See product label)

## SPECIFICATION

<b>Product Overview</b>	GMP Recombinant Mouse Cxcl10 Protein, His-Tagged was expressed in Escherichia coli cell-derived in an animal component free process under cGMP guidelines.
<b>Species</b>	Mouse
<b>Source</b>	E.coli
<b>Description</b>	Predicted to enable chemoattractant activity; chemokine receptor binding activity; and heparin binding activity. Acts upstream of or within several processes, including defense response to virus; negative regulation of myoblast differentiation; and negative regulation of myoblast fusion. Located in external side of plasma membrane and extracellular space. Is expressed in several structures, including alimentary system; axial skeleton; hemolymphoid system; and liver. Human ortholog(s) of this gene implicated in hepatitis B; middle cerebral artery infarction; and type 1 diabetes mellitus. Orthologous to human CXCL10 (C-X-C motif chemokine ligand 10).
<b>Form</b>	Lyophilized
<b>Bio-activity</b>	Measure by its ability to chemoattract BaF3 cells transfected with human CXCR3. The ED50 for this effect is <0.2 µg/mL.
<b>AA Sequence</b>	IPLARTVRCNCIHIDDGPVRMRAIGKLEIIPASLSCPRVEIATMKNDEQRCLNPESKT IKNLMKAFSQKRKRAP with polyhistidine tag at the N-terminus
<b>Endotoxin</b>	<0.1 EU per 1 µg of the protein by the LAL method.

 Tel: 1-631-559-9269    1-516-512-3133

 Email: [info@creative-biomart.com](mailto:info@creative-biomart.com)     Fax: 1-631-938-8127

 45-1 Ramsey Road, Shirley, NY 11967, USA

<b>Purity</b>	>98% as determined by SDS-PAGE. Ni-NTA chromatography
<b>Notes</b>	Please use within one month after protein reconstitution.
<b>Storage</b>	Lyophilized protein should be stored at -20°C. Upon reconstitution, protein aliquots should be stored at -20°C or -80°C.
<b>Storage Buffer</b>	The protein was lyophilized from a solution containing 1X PBS, pH 7.4.
<b>Reconstitution</b>	It is recommended to reconstitute the lyophilized protein in sterile H <sub>2</sub> O to a concentration not less than 100 µg/mL and incubate the stock solution for at least 20 min to ensure sufficient re-dissolved.

## GENE INFORMATION

<b>Gene Name</b>	Cxcl10 chemokine (C-X-C motif) ligand 10 [ <i>Mus musculus</i> (house mouse) ]
<b>Official Symbol</b>	Cxcl10
<b>Synonyms</b>	C7; IP10; CRG-2; INP10; IP-10; lfi10; mob-1; Scyb10; gIP-10
<b>Gene ID</b>	15945
<b>mRNA Refseq</b>	NM_021274.2
<b>Protein Refseq</b>	NP_067249.1
<b>UniProt ID</b>	P17515

 Tel: 1-631-559-9269 1-516-512-3133

 Email: [info@creative-biomart.com](mailto:info@creative-biomart.com)  Fax: 1-631-938-8127

 45-1 Ramsey Road, Shirley, NY 11967, USA



kDa

75-

63-

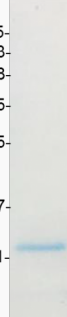
48-

35-

25-

17-

11-



Tel: 1-631-559-9269 1-516-512-3133

Email: [info@creative-biomart.com](mailto:info@creative-biomart.com) Fax: 1-631-938-8127

45-1 Ramsey Road, Shirley, NY 11967, USA