

## Recombinant Mouse Cxcl10 Protein, His-tagged

**Cat. No.** Cxcl10-525M    **Lot. No.** (See product label)

### SPECIFICATION

<b>Product Overview</b>	Recombinant Mouse TCxcl10(Ile22~Pro98) fused with His tag at N-terminal was expressed in E. coli.
<b>Species</b>	Mouse
<b>Source</b>	E.coli
<b>ProteinLength</b>	Ile22~Pro98
<b>Description</b>	Cxcl10 played an important role in many functions.
<b>Form</b>	PBS, pH7.4, containing 0.01% SKL, 1mM DTT, 5% Trehalose and Proclin300.
<b>Molecular Mass</b>	12.5kDa
<b>Identity</b>	Reconstitute in PBS or others
<b>Endotoxin</b>	<1.0EU per 1g (determined by the LAL method)
<b>Purity</b>	> 95%
<b>Applications</b>	Positive Control; Immunogen; SDS-PAGE; WB. If bio-activity of the protein is needed, please check active protein
<b>Stability</b>	The thermal stability is described by the loss rate. The loss rate was determined by

 Tel: 1-631-559-9269    1-516-512-3133

 Email: [info@creative-biomart.com](mailto:info@creative-biomart.com)     Fax: 1-631-938-8127

 45-1 Ramsey Road, Shirley, NY 11967, USA

accelerated thermal degradation test, that is, incubate the protein at 37 centigrade for 48h, and no obvious degradation and precipitation were observed. The loss rate is less than 5% within the expiration date under appropriate storage condition.

**Storage**

Avoid repeated freeze/thaw cycles. Store at 2-8 centigrade for one month. Aliquot and store at -80 centigrade for 12 months.

**Reconstitution**

Reconstitute in PBS or others

## GENE INFORMATION

**Gene Name**

Cxcl10 chemokine (C-X-C motif) ligand 10 [ *Mus musculus* ]

**Official Symbol**

Cxcl10

**Synonyms**

CXCL10; chemokine (C-X-C motif) ligand 10; C-X-C motif chemokine 10; gamma-IP10; interferon activated gene 10; small-inducible cytokine B10; interferon-gamma induced protein CRG-2; interferon-gamma-induced protein CRG-2; 10 kDa interferon gamma-induced protein; small inducible cytokine B subfamily (Cys-X-Cys), member 10; C7; IP10; CRG-2; INP10; IP-10; lfi10; mob-1; Scyb10; gIP-10;

**Gene ID**

15945

**mRNA Refseq**

NM\_021274

**Protein Refseq**

NP\_067249

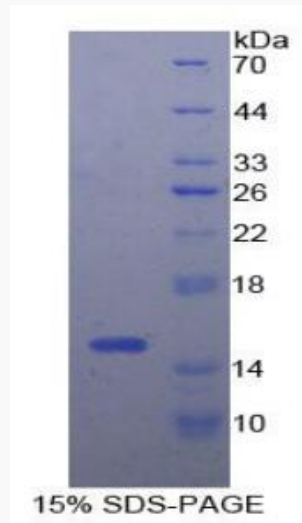
**UniProt ID**

P17515

 Tel: 1-631-559-9269 1-516-512-3133

 Email: [info@creative-biomart.com](mailto:info@creative-biomart.com)  Fax: 1-631-938-8127

 45-1 Ramsey Road, Shirley, NY 11967, USA



 Tel: 1-631-559-9269 1-516-512-3133

 Email: [info@creative-biomart.com](mailto:info@creative-biomart.com)  Fax: 1-631-938-8127

 45-1 Ramsey Road, Shirley, NY 11967, USA