

Recombinant Rat Cxcl10 protein

Cat. No. Cxcl10-631R **Lot. No.** (See product label)

SPECIFICATION

Product Overview	Recombinant Rat Cxcl10 protein was expressed in Escherichia coli.
Species	Rat
Source	E.coli
ProteinLength	77
Description	<p>CXCL10 also known as IP-10 is belonging to the CXC chemokine family. It is encoded by the CXCL10 gene, and in rat it is also named the Mob-1 gene. This gene was identified on the basis of differential expression in rat embryo fibroblasts. CXCL10 elicits its effects by binding to the cell surface chemokine receptor CXCR3. CXCL10 has been shown to be a chemoattractant for activated T-lymphocytes and monocytes/macrophages. It also has other roles, such as promotion of T cell adhesion to endothelial cells, and inhibition of bone marrow colony formation and angiogenesis. Rat CXCL10 shares approximately 68 % amino acid sequence identity with human CXCL10.</p>
Form	Lyophilized from a 0.2µm filtered concentrated solution in PBS, pH 7.4.
Bio-activity	Fully biologically active when compared to standard. The biological activity determined by a chemotaxis bioassay using human CXCR3 transfected HEK293 cells is in a concentration range of 10-50 ng/ml.
Molecular Mass	Approximately 8.7 kDa, a single non-glycosylated polypeptide chain containing 77

 Tel: 1-631-559-9269 1-516-512-3133

 Email: info@creative-biomart.com  Fax: 1-631-938-8127

 45-1 Ramsey Road, Shirley, NY 11967, USA

	amino acids.
AA Sequence	IPLARTVRCTCIDFHEQPLRPRAIGKLEIIPASLSCPHVEIIATMKKNNEKRCLNPESEAI KSLLKAVSQRRSKRAP
Endotoxin	Less than 1 EU/μg of rRtIP-10/CXCL10 as determined by LAL method.
Purity	>95% by SDS-PAGE and HPLC analysis.
Storage	Use a manual defrost freezer and avoid repeated freeze-thaw cycles. 12 months from date of receipt, -20 to -70 centigrade as supplied. 1 month, 2 to 8 centigrade under sterile conditions after reconstitution. 3 months, -20 to -70 centigrade under sterile conditions after reconstitution.
Reconstitution	We recommend that this vial be briefly centrifuged prior to opening to bring the contents to the bottom. Reconstitute in sterile distilled water or aqueous buffer containing 0.1 % BSA to a concentration of 0.1-1.0 mg/mL. Stock solutions should be apportioned into working aliquots and stored at ≤-20 centigrade. Further dilutions should be made in appropriate buffered solutions.

GENE INFORMATION

Gene Name	Cxcl10
Official Symbol	Cxcl10
Synonyms	CXCL10; chemokine (C-X-C motif) ligand 10; C-X-C motif chemokine 10; gamma-IP10; protein Mob-1; small-inducible cytokine B10; interferon-inducible protein 10; interferon-inducible cytokine IP-10; 10 kDa interferon gamma-induced protein; small inducible cytokine B subfamily (Cys-X-Cys) member 10; small inducible cytokine B subfamily (Cys-X-Cys), member 10; IP-10; Scyb10;

 Tel: 1-631-559-9269 1-516-512-3133

 Email: info@creative-biomart.com  Fax: 1-631-938-8127

 45-1 Ramsey Road, Shirley, NY 11967, USA

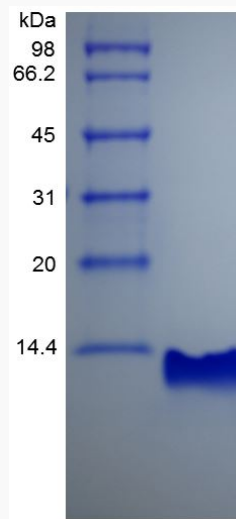
Gene ID 245920

mRNA Refseq NM_139089

Protein Refseq NP_620789

UniProt ID P48973

**SDS-PAGE of
Cxcl10-631R**



 Tel: 1-631-559-9269 1-516-512-3133

 Email: info@creative-biomart.com  Fax: 1-631-938-8127

 45-1 Ramsey Road, Shirley, NY 11967, USA