

# Recombinant Active Mouse CXCL12 Protein, His-tagged(C-ter)

**Cat. No.** Cxcl12-55M    **Lot. No.** (See product label)

## SPECIFICATION

<b>Product Overview</b>	Recombinant Active Mouse CXCL12 Protein with His tag (C-ter) was expressed in E. coli.
<b>Species</b>	Mouse
<b>Source</b>	E.coli
<b>Description</b>	This antimicrobial gene encodes a stromal cell-derived alpha chemokine member of the intercrine family. The encoded protein functions as the ligand for the G-protein coupled receptor, chemokine (C-X-C motif) receptor 4, and plays a role in many diverse cellular functions, including embryogenesis, immune surveillance, inflammation response, tissue homeostasis, and tumor growth and metastasis. Mutations in this gene are associated with resistance to human immunodeficiency virus type 1 infections. Multiple transcript variants encoding different isoforms have been found for this gene. [provided by RefSeq, Sep 2014]
<b>Form</b>	Powder
<b>Bio-activity</b>	Determined by its ability to chemoattract BaF3 mouse pro-B cells transfected with human CXCR4. The ED50 for this effect is < 0.5 ng/mL.
<b>AA Sequence</b>	MGKPVLSYRCP CRFFESH IARANVKHLKILNTPNCALQIVARLKNNNRQVCIDPKLK WIQEYLEKALNK
<b>Endotoxin</b>	Endotoxin level is less than 0.1 EU/μg of the protein, as determined by the LAL test.

 Tel: 1-631-559-9269    1-516-512-3133

 Email: [info@creative-biomart.com](mailto:info@creative-biomart.com)     Fax: 1-631-938-8127

 45-1 Ramsey Road, Shirley, NY 11967, USA

<b>Purity</b>	> 98% (by SDS-PAGE)
<b>Applications</b>	SDS-PAGE
<b>Notes</b>	For laboratory research only, not for drug, diagnostic or other use.
<b>Storage</b>	Lyophilized protein should be stored at -20°C. After reconstitution, aliquot and store at -20°C or -80°C for up to one month. Storage in frost free freezers is not recommended. Avoid repeated freeze/thaw cycles. Suggest spin the vial prior to opening.
<b>Storage Buffer</b>	PBS (pH 7.4)
<b>Reconstitution</b>	It is recommended to reconstitute the lyophilized protein in sterile water to a concentration not less than 100 µg/mL and incubate the stock solution for at least 20 min at room temperature to make sure the protein is dissolved completely.

## GENE INFORMATION

<b>Gene Name</b>	Cxcl12 chemokine (C-X-C motif) ligand 12 [ <i>Mus musculus</i> ]
<b>Official Symbol</b>	Cxcl12
<b>Synonyms</b>	CXCL12; chemokine (C-X-C motif) ligand 12; stromal cell-derived factor 1; C-X-C motif chemokine 12; pre-B cell growth-stimulating factor; pre-B-cell growth-stimulating factor; thymic lymphoma cell-stimulating factor; 12-O-tetradecanoylphorbol 13-acetate repressed protein 1; Pbsf; Sdf1; Tlsf; Sdf1a; Sdf1b; Tlsfa; Tlsfb; Tpar1; Scyb12; AI174028;
<b>Gene ID</b>	20315

 Tel: 1-631-559-9269 1-516-512-3133

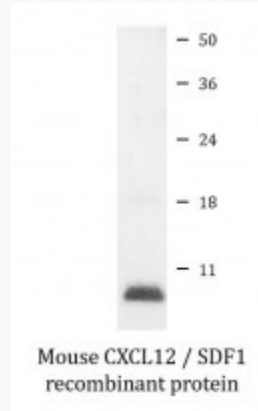
 Email: [info@creative-biomart.com](mailto:info@creative-biomart.com)  Fax: 1-631-938-8127

 45-1 Ramsey Road, Shirley, NY 11967, USA

mRNA Refseq [NM\\_001012477](#)

Protein Refseq [NP\\_001012495](#)

**SDS-PAGE**



 Tel: 1-631-559-9269 1-516-512-3133

 Email: [info@creative-biomart.com](mailto:info@creative-biomart.com)  Fax: 1-631-938-8127

 45-1 Ramsey Road, Shirley, NY 11967, USA