

## Active Recombinant Mouse Cxcl12 Protein (Gly21-Lys89), C-His tagged, Animal-free, Carrier-free

**Cat. No.** Cxcl12-80M    **Lot. No.** (See product label)

### SPECIFICATION

<b>Product Overview</b>	Recombinant Mouse Cxcl12 Protein (Gly21-Lys89) with C-His tag was expressed in E. coli and Animal-free as well as Carrier-free.
<b>Species</b>	Mouse
<b>Source</b>	E.coli
<b>ProteinLength</b>	Gly21-Lys89
<b>Description</b>	C-X-C motif chemokine 12 (CXCL12) also named stromal cell-derived factor 1 (SDF-1), which is a chemokine of the intercrine alpha family. CXCL12 is a 7.8 kDa protein containing 70 amino acid residues. CXCL12 has a key role in controlling the immune responses which is often induced by the lipopolysaccharide or IL-1. CXCL12 also activates the leukocytes during inflammation. CXCL12 induces the migration and proliferation of cells like hematopoietic progenitor, stem cells and leukocytes.
<b>Form</b>	Lyophilized
<b>Bio-activity</b>	Measure by its ability to chemoattract BaF3 cells transfected with human CXCR4. The ED50 for this effect is < 0.5 ng/mL.
<b>Molecular Mass</b>	The protein has a calculated MW of 8.97 kDa. The protein migrates below 11 kDa under reducing condition (SDS-PAGE analysis).

 Tel: 1-631-559-9269    1-516-512-3133

 Email: [info@creative-biomart.com](mailto:info@creative-biomart.com)     Fax: 1-631-938-8127

 45-1 Ramsey Road, Shirley, NY 11967, USA

<b>Endotoxin</b>	< 0.1 EU/μg of the protein by the LAL method.
<b>Purity</b>	>98% as determined by SDS-PAGE analysis.
<b>Storage</b>	This product is stable after storage at: -20 centigrade for 12 months in lyophilized state from date of receipt. -20 or -80 centigrade for 1 month under sterile conditions after reconstitution. Avoid repeated freeze/thaw cycles.
<b>Storage Buffer</b>	Lyophilized from a 0.2 μm filtered solution of PBS, pH 7.4.
<b>Reconstitution</b>	It is recommended to reconstitute the lyophilized protein in sterile H <sub>2</sub> O to a concentration not less than 200 μg/mL and incubate the stock solution for at least 20 min to ensure sufficient re-dissolved.
<b>Shipping</b>	The product is shipped with polar packs. Upon receipt, store it immediately at -20 centigrade or lower for long term storage.

## GENE INFORMATION

<b>Gene Name</b>	Cxcl12 chemokine (C-X-C motif) ligand 12 [ <i>Mus musculus</i> (house mouse) ]
<b>Official Symbol</b>	Cxcl12
<b>Synonyms</b>	CXCL12; chemokine (C-X-C motif) ligand 12; stromal cell-derived factor 1; C-X-C motif chemokine 12; pre-B cell growth-stimulating factor; pre-B-cell growth-stimulating factor; thymic lymphoma cell-stimulating factor; 12-O-tetradecanoylphorbol 13-acetate repressed protein 1; Pbsf; Sdf1; Tlsf; Sdf1a; Sdf1b; Tlsfa; Tlsfb; Tpar1; Scyb12; AI174028;
<b>Gene ID</b>	20315

 Tel: 1-631-559-9269 1-516-512-3133

 Email: [info@creative-biomart.com](mailto:info@creative-biomart.com)  Fax: 1-631-938-8127

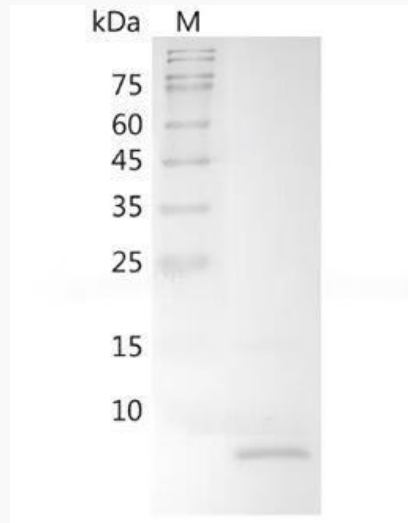
 45-1 Ramsey Road, Shirley, NY 11967, USA

mRNA Refseq [NM\\_001012477](#)

Protein Refseq [NP\\_001012495](#)

UniProt ID [P40224](#)

**SDS-PAGE analysis  
of recombinant  
mouse CXCL12.**



 Tel: 1-631-559-9269 1-516-512-3133

 Email: [info@creative-biomart.com](mailto:info@creative-biomart.com)  Fax: 1-631-938-8127

 45-1 Ramsey Road, Shirley, NY 11967, USA