

# Active GMP Recombinant Mouse Cxcl16 Protein, His-Tagged

**Cat. No.** Cxcl16-01M    **Lot. No.** (See product label)

## SPECIFICATION

<b>Product Overview</b>	GMP Recombinant Mouse Cxcl16 Protein, His-Tagged was expressed in Escherichia coli cell-derived in an animal component free process under cGMP guidelines.
<b>Species</b>	Mouse
<b>Source</b>	E.coli
<b>Description</b>	Enables chemokine activity; low-density lipoprotein particle receptor activity; and scavenger receptor activity. Involved in T cell chemotaxis and cellular response to lipopolysaccharide. Located in extracellular space. Is integral component of membrane. Is expressed in bladder; female associated reproductive structure; hindbrain meninges; male associated reproductive structure; and spinal cord meninges. Orthologous to human CXCL16 (C-X-C motif chemokine ligand 16).
<b>Form</b>	Lyophilized
<b>Bio-activity</b>	Measure by its ability to chemoattract BaF3 cells transfected with mouse CXCR6. The ED50 for this effect is <3 ng/mL.
<b>AA Sequence</b>	NQGSVAGSCSCDRTISSGTQIPQGTLDIRKYLKAFHRCPPFFIRFQLQSKSVCGGSQ DQWVRELVDCKERKECGTGHGKSFHHQKHLP with polyhistidine tag at the N-terminus
<b>Endotoxin</b>	<0.1 EU per 1 µg of the protein by the LAL method.

 Tel: 1-631-559-9269    1-516-512-3133

 Email: [info@creative-biomart.com](mailto:info@creative-biomart.com)     Fax: 1-631-938-8127

 45-1 Ramsey Road, Shirley, NY 11967, USA

<b>Purity</b>	>98% as determined by SDS-PAGE. Ni-NTA chromatography
<b>Notes</b>	Please use within one month after protein reconstitution.
<b>Storage</b>	Lyophilized protein should be stored at -20°C. Upon reconstitution, protein aliquots should be stored at -20°C or -80°C.
<b>Storage Buffer</b>	The protein was lyophilized from a solution containing 1X PBS, pH 7.4.
<b>Reconstitution</b>	It is recommended to reconstitute the lyophilized protein in sterile H2O to a concentration not less than 100 µg/mL and incubate the stock solution for at least 20 min to ensure sufficient re-dissolved.

## GENE INFORMATION

<b>Gene Name</b>	Cxcl16 chemokine (C-X-C motif) ligand 16 [ <i>Mus musculus</i> (house mouse) ]
<b>Official Symbol</b>	Cxcl16
<b>Synonyms</b>	SR-PSOX; Zmynd15; CXCL16v1; CXCL16v2; b2b498Clo; 0910001K24Rik
<b>Gene ID</b>	66102
<b>mRNA Refseq</b>	NM_023158.7
<b>Protein Refseq</b>	NP_075647.3
<b>UniProt ID</b>	Q8BSU2

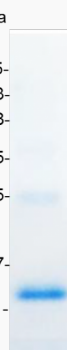
 Tel: 1-631-559-9269 1-516-512-3133

 Email: [info@creative-biomart.com](mailto:info@creative-biomart.com)  Fax: 1-631-938-8127

 45-1 Ramsey Road, Shirley, NY 11967, USA

kDa

75-  
63-  
48-  
35-  
25-  
17-  
11-



 Tel: 1-631-559-9269 1-516-512-3133

 Email: [info@creative-biomart.com](mailto:info@creative-biomart.com)  Fax: 1-631-938-8127

 45-1 Ramsey Road, Shirley, NY 11967, USA