

Recombinant Mouse Cxcl16 protein, hFc-tagged

Cat. No. Cxcl16-543M Lot. No. (See product label)

SPECIFICATION

Product Overview	Recombinant Mouse Cxcl16 protein(Q8BSU2)(Asn27-Trp201), fused with C-terminal hFc tag, was expressed in HEK293.
Species	Mouse
Source	HEK293
ProteinLength	Asn27-Trp201
Tag	C-hFc
Form	Supplied as 0.22µm filtered solution in PBS (pH 7.4).
Molecular Mass	The protein has a predicted MW of 45.9 kDa. Due to glycosylation, the protein migrates to 68-70 kDa based on Tris-Bis PAGE result.
Endotoxin	Less than 1EU per µg by the LAL method.
Purity	> 95% as determined by Tris-Bis PAGE;> 95% as determined by HPLC
Storage	Valid for 12 months from date of receipt when stored at -80°C. Recommend to aliquot the protein into smaller quantities for optimal storage. Please do not repeated freeze-thaw cycles.
Reconstitution	It is recommended that sterile water be added to the vial to prepare a stock solution of

 Tel: 1-631-559-9269 1-516-512-3133

 Email: info@creative-biomart.com  Fax: 1-631-938-8127

 45-1 Ramsey Road, Shirley, NY 11967, USA

0.2 ug/ul. Centrifuge the vial at 4°C before opening to recover the entire contents.

GENE INFORMATION

Gene Name Cxcl16 chemokine (C-X-C motif) ligand 16 [*Mus musculus*]

Official Symbol Cxcl16

Synonyms CXCL16; chemokine (C-X-C motif) ligand 16; C-X-C motif chemokine 16; SR-PSOX/CXCL16; Cxc chemokine ligand 16; small-inducible cytokine B16; transmembrane chemokine CXCL16; zinc finger, MYND-type containing 15; scavenger receptor for phosphatidylserine and oxidized low density lipoprotein; SR-PSOX; Zmynd15; AV290116; BB024863; CXCL16v1; CXCL16v2; 0910001K24Rik;

Gene ID 66102

mRNA Refseq NM_023158

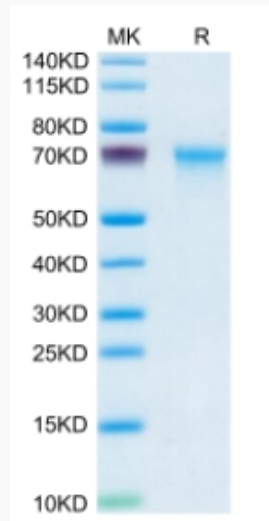
Protein Refseq NP_075647

 Tel: 1-631-559-9269 1-516-512-3133

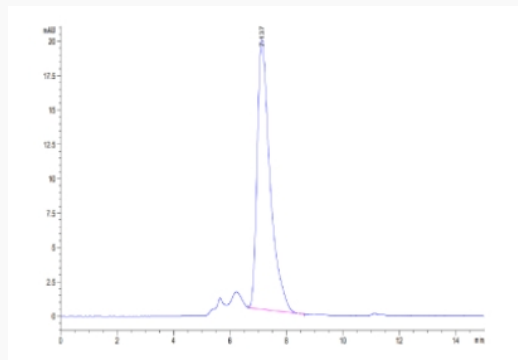
 Email: info@creative-biomart.com  Fax: 1-631-938-8127

 45-1 Ramsey Road, Shirley, NY 11967, USA

Tris-Bis PAGE



SEC-HPLC



 Tel: 1-631-559-9269 1-516-512-3133

 Email: info@creative-biomart.com  Fax: 1-631-938-8127

 45-1 Ramsey Road, Shirley, NY 11967, USA