

Active GMP Recombinant Mouse Cxcl2 Protein, His-Tagged

Cat. No. Cxcl2-01M Lot. No. (See product label)

SPECIFICATION

Product Overview	GMP Recombinant Mouse Cxcl2 Protein, His-Tagged was expressed in Escherichia coli cell-derived in an animal component free process under cGMP guidelines.
Species	Mouse
Source	E.coli
Description	Predicted to enable CXCR chemokine receptor binding activity and chemokine activity. Involved in response to molecule of bacterial origin. Located in extracellular space. Is expressed in several structures, including alimentary system; embryo mesenchyme; floor plate; respiratory system; and skin. Orthologous to several human genes including CXCL3 (C-X-C motif chemokine ligand 3).
Form	Lyophilized
Bio-activity	Measure by its ability to chemoattract BaF3 cells transfected with human CXCR2. The ED50 for this effect is <0.5 ng/mL.
AA Sequence	AVVASELRCQCLKTLPRVDFKNIQSLSVTPPGPHCAQTEVIATLKGGQKVCLDPEAP LVQKIIQKILNKGKAN with polyhistidine tag at the N-terminus
Endotoxin	<0.1 EU per 1 µg of the protein by the LAL method.
Purity	>98% as determined by SDS-PAGE. Ni-NTA chromatography

 Tel: 1-631-559-9269 1-516-512-3133

 Email: info@creative-biomart.com  Fax: 1-631-938-8127

 45-1 Ramsey Road, Shirley, NY 11967, USA

Notes	Please use within one month after protein reconstitution.
Storage	Lyophilized protein should be stored at -20°C. Upon reconstitution, protein aliquots should be stored at -20°C or -80°C.
Storage Buffer	The protein was lyophilized from a solution containing 1X PBS, pH 7.4.
Reconstitution	It is recommended to reconstitute the lyophilized protein in sterile H ₂ O to a concentration not less than 100 µg/mL and incubate the stock solution for at least 20 min to ensure sufficient re-dissolved.

GENE INFORMATION

Gene Name	Cxcl2 chemokine (C-X-C motif) ligand 2 [<i>Mus musculus</i> (house mouse)]
Official Symbol	Cxcl2
Synonyms	GROb; Gro2; Mip2; Scyb; MIP-2; Scyb2; MIP-2a; Mgsa-b; CINC-2a
Gene ID	20310
mRNA Refseq	NM_009140.2
Protein Refseq	NP_033166.1
UniProt ID	P10889

 Tel: 1-631-559-9269 1-516-512-3133

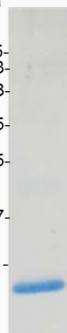
 Email: info@creative-biomart.com  Fax: 1-631-938-8127

 45-1 Ramsey Road, Shirley, NY 11967, USA



kDa

75-
63-
48-
35-
25-
17-
11-



Tel: 1-631-559-9269 1-516-512-3133

Email: info@creative-biomart.com Fax: 1-631-938-8127

45-1 Ramsey Road, Shirley, NY 11967, USA