

## Recombinant Rat Cxcl5 protein

Cat. No. Cxcl5-629R    Lot. No. (See product label)

### SPECIFICATION

<b>Product Overview</b>	Recombinant Rat Cxcl5 protein was expressed in Escherichia coli.
<b>Species</b>	Rat
<b>Source</b>	E.coli
<b>ProteinLength</b>	93
<b>Description</b>	CXCL5 is a small cytokine belonging to the CXC chemokine family that is also known as epithelial-derived neutrophil-activating peptide 78 (ENA-78). It is produced following stimulation of cells with the inflammatory cytokines interleukin-1 or tumor necrosis factor-alpha. The expression of CXCL5 has also been observed in eosinophils, and can be inhibited with the type II interferon IFN- $\gamma$ . Recombinant rat CXCL5 contains 93 amino acids which is a single, non-glycosylated polypeptide chain. Rat CXCL5 shares 57 % amino acid sequence identity with human CXCL5.
<b>Form</b>	Lyophilized from a 0.2 $\mu$ m filtered concentrated solution in 2 x PBS, pH 7.4.
<b>Bio-activity</b>	Fully biologically active when compared to standard. The biological activity determined by a chemotaxis bioassay using human peripheral blood neutrophils is in a concentration of 10-100 ng/ml.
<b>Molecular Mass</b>	Approximately 10.1 kDa, a single, non-glycosylated polypeptide chain containing 93 amino acids.

 Tel: 1-631-559-9269    1-516-512-3133

 Email: [info@creative-biomart.com](mailto:info@creative-biomart.com)     Fax: 1-631-938-8127

 45-1 Ramsey Road, Shirley, NY 11967, USA

<b>AA Sequence</b>	APFSAMVATELRCVCLTLAPRINPKMIANLEVIPAGPHCPKVEVIAKLKNQKDNVCLD PQAPLIKKVIQKILGSENKKTARNALALVRSASTQ
<b>Endotoxin</b>	Less than 1 EU/μg of rRtLIX/CXCL5 as determined by LAL method.
<b>Purity</b>	>97% by SDS-PAGE and HPLC analysis.
<b>Storage</b>	Use a manual defrost freezer and avoid repeated freeze-thaw cycles. 12 months from date of receipt, -20 to -70 centigrade as supplied. 1 month, 2 to 8 centigrade under sterile conditions after reconstitution. 3 months, -20 to -70 centigrade under sterile conditions after reconstitution.
<b>Reconstitution</b>	We recommend that this vial be briefly centrifuged prior to opening to bring the contents to the bottom. Reconstitute in sterile distilled water or aqueous buffer containing 0.1 % BSA to a concentration of 0.1-1.0 mg/mL. Stock solutions should be apportioned into working aliquots and stored at ≤-20 centigrade. Further dilutions should be made in appropriate buffered solutions.

## GENE INFORMATION

<b>Gene Name</b>	Cxcl5
<b>Official Symbol</b>	Cxcl5
<b>Synonyms</b>	CXCL5; chemokine (C-X-C motif) ligand 5; C-X-C motif chemokine 5; cytokine LIX; CXC chemokine LIX; small-inducible cytokine B5; chemokine (C-X-C motif) ligand 6 (granulocyte chemotactic protein 2); Cxcl6;
<b>Gene ID</b>	60665
<b>mRNA Refseq</b>	NM_022214

 Tel: 1-631-559-9269 1-516-512-3133

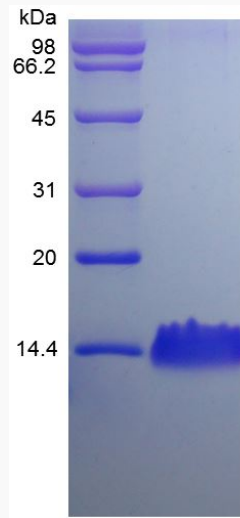
 Email: [info@creative-biomart.com](mailto:info@creative-biomart.com)  Fax: 1-631-938-8127

 45-1 Ramsey Road, Shirley, NY 11967, USA

Protein Refseq NP\_071550

UniProt ID P97885

SDS-PAGE of Cxcl5-629R



 Tel: 1-631-559-9269 1-516-512-3133

 Email: [info@creative-biomart.com](mailto:info@creative-biomart.com)  Fax: 1-631-938-8127

 45-1 Ramsey Road, Shirley, NY 11967, USA