

Recombinant Mouse Cxcl5 protein

Cat. No. Cxcl5-98M **Lot. No.** (See product label)

SPECIFICATION

Product Overview	Recombinant Mouse Cxcl5 protein (92 a.a.) was expressed in Escherichia coli.
Species	Mouse
Source	E.coli
ProteinLength	92
Description	CXCL5 is a small cytokine belonging to the CXC chemokine family that is also known as epithelial-derived neutrophil-activating peptide 78 (ENA-78) and the gene for CXCL5 is encoded by the CXCL5 gene. It May participate in the recruitment of inflammatory cells by injured or infected tissue. CXCL5 is cleaved into the following 2 chains: GCP-2 (1-78) and GCP-2 (9-78) which attract neutrophils and are involved in neutrophil activation. Recombinant Mouse CXCL5 (92 a.a.) contains 92 amino acids and shares 57 % amino acid sequence identity with human CXCL5.
Form	Lyophilized from a 0.2µm filtered concentrated solution in 20 mM PB, pH 7.4, 150 mM NaCl.
Bio-activity	Fully biologically active when compared to standard. The biological activity determined by a chemotaxis bioassay using human peripheral blood neutrophils is in a concentration of 10-100 ng/ml.
Molecular Mass	Approximately 9.8 kDa, a single, non-glycosylated polypeptide chain containing 92 amino acids.

 Tel: 1-631-559-9269 1-516-512-3133

 Email: info@creative-biomart.com  Fax: 1-631-938-8127

 45-1 Ramsey Road, Shirley, NY 11967, USA

AA Sequence	APSSVIAATELRCVCLTVTPKINPKLIANLEVIPAGPQCPTVEVIAKLNQKEVCLDPEA PVIKKIIQKILGSDKKKAKRNALAVERTASVQ
Endotoxin	Less than 1 EU/μg of rMuLIX/CXCL5 as determined by LAL method.
Purity	>97% by SDS-PAGE and HPLC analysis.
Storage	Use a manual defrost freezer and avoid repeated freeze-thaw cycles. 12 months from date of receipt, -20 to -70 centigrade as supplied. 1 month, 2 to 8 centigrade under sterile conditions after reconstitution. 3 months, -20 to -70 centigrade under sterile conditions after reconstitution.
Reconstitution	We recommend that this vial be briefly centrifuged prior to opening to bring the contents to the bottom. Reconstitute in sterile distilled water or aqueous buffer containing 0.1 % BSA to a concentration of 0.1-1.0 mg/mL. Stock solutions should be apportioned into working aliquots and stored at ≤-20 centigrade. Further dilutions should be made in appropriate buffered solutions.

GENE INFORMATION

Gene Name	Cxcl5
Official Symbol	Cxcl5
Synonyms	CXCL5; chemokine (C-X-C motif) ligand 5; C-X-C motif chemokine 5; cytokine LIX; small-inducible cytokine B5; granulocyte chemotactic protein-2; small inducible cytokine B subfamily, member 5; small inducible cytokine subfamily B, member 15; LIX; GCP-2; Scyb5; Scyb6; ENA-78; AMCF-II;
Gene ID	20311

 Tel: 1-631-559-9269 1-516-512-3133

 Email: info@creative-biomart.com  Fax: 1-631-938-8127

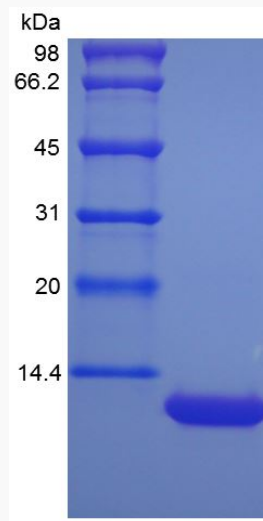
 45-1 Ramsey Road, Shirley, NY 11967, USA

mRNA Refseq [NM_009141](#)

Protein Refseq [NP_033167](#)

UniProt ID [P50228](#)

SDS-PAGE of Cxcl5-
98M



 Tel: 1-631-559-9269 1-516-512-3133

 Email: info@creative-biomart.com  Fax: 1-631-938-8127

 45-1 Ramsey Road, Shirley, NY 11967, USA