

Active GMP Recombinant Mouse Cxcl7 (48-109) Protein, His-Tagged

Cat. No. Cxcl7-02M **Lot. No.** (See product label)

SPECIFICATION

Product Overview	GMP Recombinant Mouse Cxcl7 (48-109) Protein, His-Tagged was expressed in Escherichia coli cell-derived in an animal component free process under cGMP guidelines.
Species	Mouse
Source	E.coli
ProteinLength	48-109 a.a.
Description	<p>Predicted to enable chemokine binding activity; chemokine receptor activity; and scavenger receptor activity. Acts upstream of or within negative regulation of cell population proliferation and positive regulation of ERK1 and ERK2 cascade.</p> <p>Predicted to be located in several cellular components, including cell surface; clathrin-coated pit; and endosome. Predicted to be active in external side of plasma membrane. Is expressed in several structures, including adrenal gland; central nervous system; genitourinary system; heart; and hemolymphoid system.</p> <p>Orthologous to human ACKR3 (atypical chemokine receptor 3).</p>
Form	Lyophilized
Bio-activity	Measure by its ability to chemoattract BaF3 cells transfected with human CXCR2. The ED50 for this effect is <5 ng/mL.

 Tel: 1-631-559-9269 1-516-512-3133

 Email: info@creative-biomart.com  Fax: 1-631-938-8127

 45-1 Ramsey Road, Shirley, NY 11967, USA

AA Sequence	IELRCRCTNTISGIPFNSISLVNVYRPGVHCADVEVIATLKNGQKTCLDPNAPGVKRIV MKI with polyhistidine tag at the N-terminus
Endotoxin	<0.1 EU per 1 µg of the protein by the LAL method.
Purity	>98% as determined by SDS-PAGE. Ni-NTA chromatography
Notes	Please use within one month after protein reconstitution.
Storage	Lyophilized protein should be stored at -20°C. Upon reconstitution, protein aliquots should be stored at -20°C or -80°C.
Storage Buffer	The protein was lyophilized from a solution containing 1X PBS, pH 7.4.
Reconstitution	It is recommended to reconstitute the lyophilized protein in sterile H2O to a concentration not less than 100 µg/mL and incubate the stock solution for at least 20 min to ensure sufficient re-dissolved.

GENE INFORMATION

Official Symbol	Cxcl7
Synonyms	Rdc1; Cxcr7; RDC-1; CXC-R7; CXCR-7; Cmkor1
Gene ID	12778
mRNA Refseq	NM_001271607.1
Protein Refseq	NP_001258536.1
UniProt ID	P56485

 Tel: 1-631-559-9269 1-516-512-3133

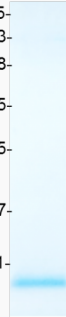
 Email: info@creative-biomart.com  Fax: 1-631-938-8127

 45-1 Ramsey Road, Shirley, NY 11967, USA



kDa

75-
63-
48-
35-
25-
17-
11-



Tel: 1-631-559-9269 1-516-512-3133

Email: info@creative-biomart.com Fax: 1-631-938-8127

45-1 Ramsey Road, Shirley, NY 11967, USA