

Recombinant Mouse Cxcr2 Full Length Transmembrane protein, His-tagged

Cat. No. Cxcr2-1314M **Lot. No.** (See product label)

SPECIFICATION

Product Overview	Recombinant Mouse Cxcr2 protein(P35343)(1-359aa), fused to N-terminal His tag, was expressed in E. coli.
Species	Mouse
Source	E.coli
ProteinLength	1-359aa
Form	If the delivery form is liquid, the default storage buffer is Tris/PBS-based buffer, 5%-50% glycerol. If the delivery form is lyophilized powder, the buffer before lyophilization is Tris/PBS-based buffer, 6% Trehalose, pH 8.0.
Molecular Mass	43.2 kDa
AA Sequence	MGEFKVDKFNIEDFFSGDLDFNYSSGMPSILPDAVPCHSENLEINSYAVVVIYVLVTL L SLVGNSLVMLVILYNRSTCSVTDVYLLNLAIADLFFALTLPVWAASKVNGWTFGSTL CKI FSYVKEVTFYSSVLLACISMDRYLAIVHATSTLIQKRHLVKFVCIAMWLLSVILAL PIL ILRNPVKVNLSTLVCYEDVGNNTSRLRVVLRILPQTFGFLVPLLIMLFCYGFTRLRT LFKA HMGQKHRAMRVIFAVVLVFLLCWLPYNLVLFTDTLMRTKLIKETCERRDDIDK ALNATEI LGFLHSCLNPIIYAFIGQKFRHGLLKIMATYGLVSKEFLAKEGRPSFVSSSS ANTSTTL

 Tel: 1-631-559-9269 1-516-512-3133

 Email: info@creative-biomart.com  Fax: 1-631-938-8127

 45-1 Ramsey Road, Shirley, NY 11967, USA

Storage Store at -20°C/-80°C upon receipt, aliquoting is necessary for mutiple use. Avoid repeated freeze-thaw cycles.

Reconstitution Please reconstitute protein in deionized sterile water to a concentration of 0.1-1.0 mg/mL. We recommend to add 5-50% of glycerol (final concentration) and aliquot for long-term storage at -20°C/-80°C. Our default final concentration of glycerol is 50%.

GENE INFORMATION

Gene Name [Cxcr2 chemokine \(C-X-C motif\) receptor 2 \[Mus musculus \]](#)

Official Symbol [Cxcr2](#)

Synonyms CXCR2; chemokine (C-X-C motif) receptor 2; C-X-C chemokine receptor type 2; CXC-R2; CXCR-2; IL-8R B; GRO/MGSA receptor; IL-8 receptor alpha chain; chemokine (C-X-C) receptor 2; interleukin 8 receptor, beta; interleukin-8 receptor type B; high affinity interleukin-8 receptor B; CD128; IL8RA; Il8rb; CDw128; Cmkar2; Gpcr16; IL-8Rh; IL-8rb; mIL-8RH;

Gene ID [12765](#)

mRNA Refseq [NM_009909](#)

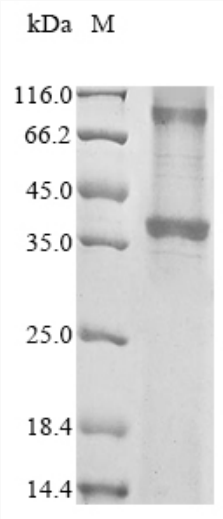
Protein Refseq [NP_034039](#)

 Tel: 1-631-559-9269 1-516-512-3133

 Email: info@creative-biomart.com  Fax: 1-631-938-8127

 45-1 Ramsey Road, Shirley, NY 11967, USA

SDS-PAGE



 Tel: 1-631-559-9269 1-516-512-3133

 Email: info@creative-biomart.com  Fax: 1-631-938-8127

 45-1 Ramsey Road, Shirley, NY 11967, USA