

Recombinant Mouse Cyld protein, His&Myc-tagged

Cat. No. Cyld-653M **Lot. No.** (See product label)

SPECIFICATION

Product Overview	Recombinant Mouse Cyld protein(Q80TQ2)(579-952aa), fused with N-terminal His tag and C-terminal Myc tag, was expressed in E.coli.
Species	Mouse
Source	E.coli
ProteinLength	579-952aa
Form	If the delivery form is liquid, the default storage buffer is Tris/PBS-based buffer, 5%-50% glycerol. If the delivery form is lyophilized powder, the buffer before lyophilization is Tris/PBS-based buffer, 6% Trehalose, pH 8.0.
Molecular Mass	50.6 kDa
Purity	Greater than 90% as determined by SDS-PAGE.
Storage	Store at -20°C/-80°C upon receipt, aliquoting is necessary for mutiple use. Avoid repeated freeze-thaw cycles.
Reconstitution	We recommend that this vial be briefly centrifuged prior to opening to bring the contents to the bottom. Please reconstitute protein in deionized sterile water to a concentration of 0.1-1.0 mg/mL. We recommend to add 5-50% of glycerol (final concentration) and aliquot for long-term storage at -20°C/-80°C.

 Tel: 1-631-559-9269 1-516-512-3133

 Email: info@creative-biomart.com  Fax: 1-631-938-8127

 45-1 Ramsey Road, Shirley, NY 11967, USA

AA Sequence

GLEIMIGKKKGIQGHYNscyldstlfclfafssaldtvllrpkeKNDIEYYSETQELLR
 TEIVNPLRIYGYVCATKIMKLRKILEKVEAASGFTSEEKDPEEFLNLFHDILRVEPLLKI
 RSAGQKVQDCNFYQIFMEKNEKVGVPtIQQLLEWSFINSNLKFAEAPSCLIIQMPrF
 GKDFKLFKKIFPSLELNITDlLEDTPRQCRICGGLAMYECRECYDDPDISAGKIKQFC
 KTCSTQVHLHPRRLNHSYHPVSLPKDLPDWDWRHGCIPCQKMELFAVLCIETSHYV
 AFVKYgKDDSAWLFFDSMADRdGGQNGFNIPQVTPCPEVGEYLKMSLEDLHSLDS
 RRIQGCARRLLCDAYMCMYQSPTMSLYK

GENE INFORMATION

Gene Name

Cyld cylindromatosis (turban tumor syndrome) [*Mus musculus*]

Official Symbol

Cyld

Synonyms

CYLD; cylindromatosis (turban tumor syndrome); ubiquitin carboxyl-terminal hydrolase CYLD; ubiquitin thioesterase CYLD; deubiquitinating enzyme CYLD; ubiquitin thiolesterase CYLD; ubiquitin-specific-processing protease CYLD; probable ubiquitin carboxyl-terminal hydrolase CYLD; EAC; CDMT; CYLD1; mKIAA0849; 2010013M14Rik; 2900009M21Rik; C130039D01Rik;

Gene ID

74256

mRNA Refseq

NM_001128169

Protein Refseq

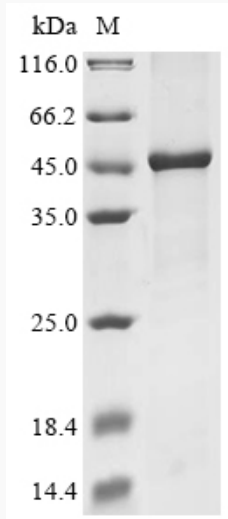
NP_001121641

 Tel: 1-631-559-9269 1-516-512-3133

 Email: info@creative-biomart.com  Fax: 1-631-938-8127

 45-1 Ramsey Road, Shirley, NY 11967, USA

SDS-PAGE



 Tel: 1-631-559-9269 1-516-512-3133

 Email: info@creative-biomart.com  Fax: 1-631-938-8127

 45-1 Ramsey Road, Shirley, NY 11967, USA