

Recombinant Mouse Cyp11a1 protein, MBP&His-Avi-tagged, Biotinylated

Cat. No. Cyp11a1-533M **Lot. No.** (See product label)

SPECIFICATION

Product Overview	Biotinylated Recombinant Mouse Cyp11a1 protein(Q9QZ82)(37-526aa), fused with N-terminal MBP tag and C-terminal His and Avi tag, was expressed in E.coli.
Species	Mouse
Source	E.coli
ProteinLength	37-526a.a.
Tag	MBP&His&Avi
Conjugation/Label	Biotin
Form	If the delivery form is liquid, the default storage buffer is Tris/PBS-based buffer, 5%-50% glycerol. If the delivery form is lyophilized powder, the buffer before lyophilization is Tris/PBS-based buffer, 6% Trehalose, pH 8.0.
Molecular Mass	104.4 kDa
Purity	Greater than 85% as determined by SDS-PAGE.
Storage	Store at -20°C/-80°C upon receipt, aliquoting is necessary for mutiple use. Avoid repeated freeze-thaw cycles.

 Tel: 1-631-559-9269 1-516-512-3133

 Email: info@creative-biomart.com  Fax: 1-631-938-8127

 45-1 Ramsey Road, Shirley, NY 11967, USA

Reconstitution

We recommend that this vial be briefly centrifuged prior to opening to bring the contents to the bottom. Please reconstitute protein in deionized sterile water to a concentration of 0.1-1.0 mg/mL. We recommend to add 5-50% of glycerol (final concentration) and aliquot for long-term storage at -20°C/-80°C.

AA Sequence

TSTSSPRSFNEIPSPGDNGWLNLYHFWRESGTQKIHQYHQMMSFQKYGPIYREKLGTL
 LESVYIVDPKDASILFSCEGPNPERFLVPPWVAYHQYYQRPIGVLFKSSDAWKKDRI
 VLNQEVMAPGAIKNFVPLLEGVAQDFIKVLHRRRIKQQNSGNFSGVISDDLFRFSFESI
 SSVIFGERMGMLEEIVDPEAQRFINAVYQMFHTSVPMNLNPPDFRLLRKTWWDHA
 AAWDVIFNKADEYTNFYWDLRQKRDFSQYPGVLYSLLGGNKLPFKNIQANITEMLA
 GGVDTTSMTLQWNLYEMAHNLKVQEMLRAEVLAARRQAQGDMAKMOVLPPLKA
 SIKETLRLHPISVTLQRYTVNDLVLRNYKIPAKTLVQVASFAMGRDPGFFPNPNKFD
 TRWLEKSQNTTHFRYLGFGWVGRQCLGRRIAELEMTILLINLLENFRIEVQNLRDVG
 TKFSLILMPENPILFNFQPLKQDLGPAVTRKDNTVN

Conjugation

Biotin

GENE INFORMATION

Gene Name

Cyp11a1 cytochrome P450 side chain cleavage enzyme 11a1 [*Mus musculus*]

Official Symbol

Cyp11a1

Synonyms

CYP11A1; cytochrome P450 side chain cleavage enzyme 11a1;

Gene ID

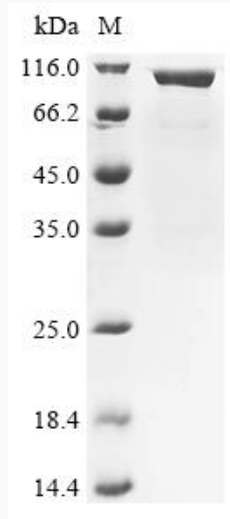
56432

 Tel: 1-631-559-9269 1-516-512-3133

 Email: info@creative-biomart.com  Fax: 1-631-938-8127

 45-1 Ramsey Road, Shirley, NY 11967, USA

SDS-PAGE



 Tel: 1-631-559-9269 1-516-512-3133

 Email: info@creative-biomart.com  Fax: 1-631-938-8127

 45-1 Ramsey Road, Shirley, NY 11967, USA