

Recombinant Rat Cyp17a1 protein, His & T7-tagged

Cat. No. Cyp17a1-2117R Lot. No. (See product label)

SPECIFICATION

Product Overview	Recombinant Rat Cyp17a1 aa. (Thr201~Thr507 (Accession # P11715)) fused with N-terminal His & T7 tag was produced in E. coli cells.
Species	Rat
Source	E.coli
ProteinLength	Thr201~Thr507
Form	Freeze-dried powder
Molecular Mass	Predicted Molecular Mass: 38.4kDa
Endotoxin	<1.0EU per 1ug (determined by the LAL method)
Purity	>95%
Characteristic	The isoelectric point is 5.2.
Applications	SDS-PAGE; WB; ELISA; IP.
Stability	The thermal stability is described by the loss rate of the target protein. The loss rate was determined by accelerated thermal degradation test, that is, incubate the protein at 37°C for 48h, and no obvious degradation and precipitation were observed. (Referring from China Biological Products Standard, which was calculated by the

 Tel: 1-631-559-9269 1-516-512-3133

 Email: info@creative-biomart.com  Fax: 1-631-938-8127

 45-1 Ramsey Road, Shirley, NY 11967, USA

Arrhenius equation.) The loss of this protein is less than 5% within the expiration date under appropriate storage condition.

Storage

Avoid repeated freeze/thaw cycles. Store at 2-8°C for one month. Aliquot and store at -80°C for 12 months.

Storage Buffer

Supplied as lyophilized form in 20mM Tris, 150mM NaCl, pH8.0, containing 1mM EDTA, 1mM DTT, 0.01% sarcosyl, 5% trehalose, and preservative.

Reconstitution

Reconstitute in sterile ddH₂O.

GENE INFORMATION

Gene Name

Cyp17a1 cytochrome P450, family 17, subfamily a, polypeptide 1 [*Rattus norvegicus* (Norway rat)]

Official Symbol

Cyp17a1

Synonyms

Gclc; glutamate-cysteine ligase, catalytic subunit; Glclc; GCS heavy chain; Glutamylcysteine gamma synthetase light chain; gamma-ECS; gamma-glutamylcysteine synthetase

Gene ID

25146

mRNA Refseq

NM_012753.2

Protein Refseq

NP_036885.1

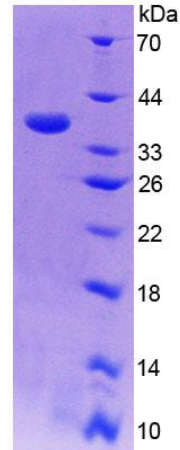
UniProt ID

P11715

 Tel: 1-631-559-9269 1-516-512-3133

 Email: info@creative-biomart.com  Fax: 1-631-938-8127

 45-1 Ramsey Road, Shirley, NY 11967, USA



15% SDS-PAGE

SDS-PAGE

Tel: 1-631-559-9269 1-516-512-3133

Email: info@creative-biomart.com Fax: 1-631-938-8127

45-1 Ramsey Road, Shirley, NY 11967, USA