

Recombinant Rat Cyp1a1 protein, His&Myc-tagged

Cat. No. Cyp1a1-242R **Lot. No.** (See product label)

SPECIFICATION

Product Overview	Recombinant Rat Cyp1a1 protein(P00185)(2-524aa), fused with N-terminal His tag and C-terminal Myc tag, was expressed in E.coli.
Species	Rat
Source	E.coli
ProteinLength	2-524a.a.
Tag	His&Myc
Form	If the delivery form is liquid, the default storage buffer is Tris/PBS-based buffer, 5%-50% glycerol. If the delivery form is lyophilized powder, the buffer before lyophilization is Tris/PBS-based buffer, 6% Trehalose, pH 8.0.
Molecular Mass	66.7 kDa
Purity	Greater than 90% as determined by SDS-PAGE.
Storage	Store at -20°C/-80°C upon receipt, aliquoting is necessary for mutiple use. Avoid repeated freeze-thaw cycles.
Reconstitution	We recommend that this vial be briefly centrifuged prior to opening to bring the contents to the bottom. Please reconstitute protein in deionized sterile water to a concentration of 0.1-1.0 mg/mL.We recommend to add 5-50% of glycerol (final

 Tel: 1-631-559-9269 1-516-512-3133

 Email: info@creative-biomart.com  Fax: 1-631-938-8127

 45-1 Ramsey Road, Shirley, NY 11967, USA



concentration) and aliquot for long-term storage at -20°C/-80°C.

AA Sequence

PSVYGFPAFTSATELLAVTTFCLGFVVVRVTRTWVPKGLKSPGPWGLPFIGHVLT
LGKNPHLSLTKLSQQYGDVLQIRIGSTPVVVL SGLNTIKQALVKQGDDFKGRPDLYSF
TLIANGQSMTFNPDSGPLWAARRRLAQNALKSFSIASDPTLASSCYLEEHVSKEAEY
LISKFQKLMAEVBGFDPFKYL VVSVANVICAICFGRRYDHDDQELLSIVNLSNEFGEV
TGSGYPADFIPIRLRYLPNSSLDAFKDLNKKFY SFMKKLIKEHYRTFEKGHIRDITDSLIE
HCQDRRLDENANVQLSDDKVITIVFDLFGAGFD TITTAISWSLMYLVTNPRIQRKIQEE
LDTVIGRDRQPRLSDRPQLPYLEAFIETFRHSSFPFTIPHSTIRD TSLNGFYIPKGH
CVFVNQWQVNHDQELW GDPNEFRPERFLTSSGTLDKHLSEK VILFGLGKRKCIGETI
GRLEVFLFLAILLQQMEFNVSPGEKVD MTPAYGLTLKHARCEHFQVQMRSSGPQHL
QA

GENE INFORMATION

Gene Name Cyp1a1 cytochrome P450, family 1, subfamily a, polypeptide 1 [*Rattus norvegicus*]

Official Symbol Cyp1a1

Synonyms

CYP1A1; cytochrome P450, family 1, subfamily a, polypeptide 1; cytochrome P450 1A1; CYP1A1; P450MT2; P450form6; dioxin-inducible; cytochrome P1-450; cytochrome P450-C; cytochrome P450MT2; cytochrome P450, 1a1; microsomal monooxygenase; xenobiotic monooxygenase; aryl hydrocarbon hydroxylase; flavoprotein-linked monooxygenase; cytochrome P450 subfamily I (aromatic compound-inducible) member A1 (C6 form c) (C6 form c); cytochrome P450, subfamily I (aromatic compound-inducible), member A1 (C6, form c) (C6, form c); AHH; AHRR; CP11; CYP1; Cyp45c; P1-450; P450-C; P450DX; Cypc45c; P-450MC;

Gene ID 24296

Tel: 1-631-559-9269 1-516-512-3133

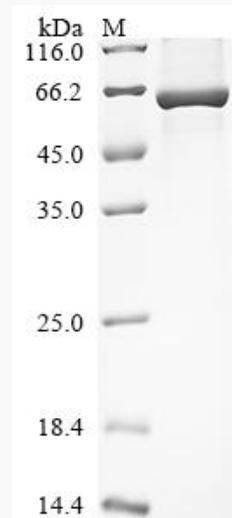
Email: info@creative-biomart.com Fax: 1-631-938-8127

45-1 Ramsey Road, Shirley, NY 11967, USA

mRNA Refseq [NM_012540](#)

Protein Refseq [NP_036672](#)

SDS-PAGE



 Tel: 1-631-559-9269 1-516-512-3133

 Email: info@creative-biomart.com  Fax: 1-631-938-8127

 45-1 Ramsey Road, Shirley, NY 11967, USA