

Recombinant Rat Cyp1a2 protein, His-tagged

Cat. No. Cyp1a2-7961R Lot. No. (See product label)

SPECIFICATION

Product Overview	Recombinant Rat Cyp1a2 aa. (Val192~Glu444) fused with N-terminal His tag was produced in E. coli cells.
Species	Rat
Source	E.coli
ProteinLength	Val192~Glu444
Description	A monooxygenase that may play a role in xenobiotic metabolism.
Form	Freeze-dried powder
Molecular Mass	33kDa as determined by SDS-PAGE reducing conditions.
Endotoxin	<1.0EU per 1ug (determined by the LAL method)
Purity	>98%
Characteristic	The isoelectric point is 6.1.
Applications	SDS-PAGE; WB; ELISA; IP; CoIP; ReporterAssays; Purification; Amine Reactive Labeling
Stability	The thermal stability is described by the loss rate of the target protein. The loss rate

 Tel: 1-631-559-9269 1-516-512-3133

 Email: info@creative-biomart.com  Fax: 1-631-938-8127

 45-1 Ramsey Road, Shirley, NY 11967, USA

was determined by accelerated thermal degradation test, that is, incubate the protein at 37°C for 48h, and no obvious degradation and precipitation were observed. (Referring from China Biological Products Standard, which was calculated by the Arrhenius equation.) The loss of this protein is less than 5% within the expiration date under appropriate storage condition.

Storage Avoid repeated freeze/thaw cycles. Store at 2-8°C for one month. Aliquot and store at -80°C for 12 months.

Concentration 200µg/mL

Storage Buffer 20mM Tris, 150mM NaCl, pH8.0, containing 1mM EDTA, 1mM DTT, 0.01% sarcosyl, 5%Trehalose and Proclin300.

Reconstitution Reconstitute in 20mM Tris, 150mM NaCl (pH8.0) to a concentration of 0.1-1.0 mg/mL. Do not vortex.

GENE INFORMATION

Gene Name [Cyp1a2 cytochrome P450, family 1, subfamily a, polypeptide 2 \[Rattus norvegicus \(Norway rat\) \]](#)

Official Symbol [Cyp1a2](#)

Synonyms Cyp1a2; cytochrome P450, family 1, subfamily a, polypeptide 2; CYPD45; P-450d; RATCYPD45; cytochrome P450 1A2; CYPIA2; Cytochrome P450 subfamily I (aromatic compound-inducible) member A2 (Q42 form d); P-448; P450-D; cholesterol 25-hydroxylase; cytochrome P-448; cytochrome P-450d; cytochrome P450, 1a2; cytochrome P450, subfamily I (aromatic compound-inducible), member A2 (Q42, form d); cytochrome P450-D

 Tel: 1-631-559-9269 1-516-512-3133

 Email: info@creative-biomart.com  Fax: 1-631-938-8127

 45-1 Ramsey Road, Shirley, NY 11967, USA

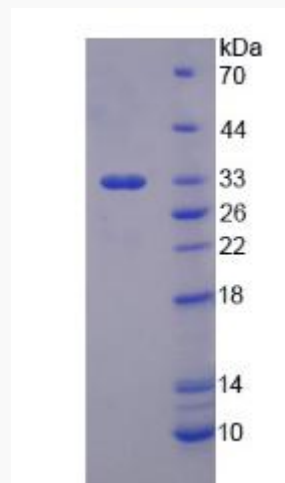
Gene ID 24297

mRNA Refseq NM_012541.3

Protein Refseq NP_036673.3

UniProt ID P04799

SDS-PAGE



 Tel: 1-631-559-9269 1-516-512-3133

 Email: info@creative-biomart.com  Fax: 1-631-938-8127

 45-1 Ramsey Road, Shirley, NY 11967, USA