

Recombinant Mouse Cyp24a1 protein

Cat. No. Cyp24a1-4608M **Lot. No.** (See product label)

SPECIFICATION

Product Overview	Recombinant Mouse Cyp24a1 protein(Q64441)(36-514 aa) was expressed in E.coli.
Species	Mouse
Source	E.coli
ProteinLength	36-514 aa
Form	For liquid formulations, the standard storage buffer consists of a Tris or PBS based solution supplemented with 5-50% glycerol. When provided as lyophilized powder, the product undergoes freeze-drying from a Tris- or PBS-based formulation containing 6% trehalose, adjusted to pH 8.0 prior to the lyophilization process.
Molecular Mass	55.6 kDa
AASequence	RAPKEVPLCPLMTDGETRNVTSPLGPTNWPLLGSLLIFWKGGGLKKQHDTLAEYHK KYGQIFRMKLGSFDSVHLGSPSLLLEALYRTESAHPQRLEIKPWKAYRDHRNEAYGL MILEGQEWQRVRSFAFQKKLMKPVEIMKLDKKINEVLADFMGQIDELRDERGRIQDLY SELNKWSFESICLVLYEKRFGLLQKDTEEEALTFIAAIKTMMSTFGKMMVTPVELHKR LNTKVWQAHTLAWDTIFKSVKPCIDHRLERYSQQPGADFLCDIYQQDHLSKKELYAA VTELQLAAVETTANSLMWILYNLSRNPQVQQRLLREIQSVLPDNQTPRAEDVRNMP YLKACLKESMRLTPSVPFTTRTLDKPTVLGEYTLPKGTVTLTNTQVLGSSSEDNFEDA DKFRPERWLEKEKKINPFAHLPGVGVGKRMCIARRLAELQLHLALCWIIQKYNIVATDS EPVEMLHLGILVPSRELPIAFCPR

 Tel: 1-631-559-9269 1-516-512-3133

 Email: info@creative-biomart.com  Fax: 1-631-938-8127

 45-1 Ramsey Road, Shirley, NY 11967, USA

Purity	Greater than 85% as determined by SDS-PAGE.
Storage	Store at -20°C/-80°C upon receipt, aliquoting is necessary for mutiple use. Avoid repeated freeze-thaw cycles.
Reconstitution	Please reconstitute protein indeionized sterile water to a concentration of 0.1-1.0 mg/mL. Aliquot for long-term storage at -80°C.

GENE INFORMATION

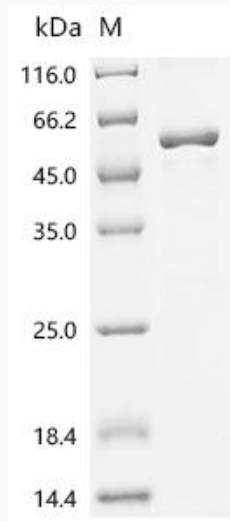
Gene Name	Cyp24a1 cytochrome P450, family 24, subfamily a, polypeptide 1 [<i>Mus musculus</i>]
Official Symbol	Cyp24a1
Synonyms	CYP24A1; cytochrome P450, family 24, subfamily a, polypeptide 1; 1,25-dihydroxyvitamin D(3) 24-hydroxylase, mitochondrial; cytochrome P450, 24; cytochrome P450 24A1; cytochrome P450-CC24; cytochrome P450, 24a1; vitamin D(3) 24-hydroxylase; 25-hydroxyvitamin D-24-hydroxylase; CP24; Cyp24; 24-OHase; MGC129158; MGC129159;
Gene ID	13081
mRNA Refseq	NM_009996
Protein Refseq	NP_034126

 Tel: 1-631-559-9269 1-516-512-3133

 Email: info@creative-biomart.com  Fax: 1-631-938-8127

 45-1 Ramsey Road, Shirley, NY 11967, USA

SDS-PAGE



 Tel: 1-631-559-9269 1-516-512-3133

 Email: info@creative-biomart.com  Fax: 1-631-938-8127

 45-1 Ramsey Road, Shirley, NY 11967, USA