

Recombinant Mouse Cyp2e1 protein(2-493aa), His-tagged

Cat. No. Cyp2e1-2922M Lot. No. (See product label)

SPECIFICATION

Product Overview	Recombinant Mouse Cyp2e1 protein(Q05421)(2-493aa), fused with N-terminal His tag, was expressed in E. coli.
Species	Mouse
Source	E.coli
ProteinLength	2-493aa
Form	If the delivery form is liquid, the default storage buffer is Tris/PBS-based buffer, 5%-50% glycerol. If the delivery form is lyophilized powder, the buffer before lyophilization is Tris/PBS-based buffer, 6% Trehalose, pH 8.0.
Molecular Mass	60.8 kDa
Purity	Greater than 85% as determined by SDS-PAGE.
Storage	Store at -20°C/-80°C upon receipt, aliquoting is necessary for mutiple use. Avoid repeated freeze-thaw cycles.
Reconstitution	We recommend that this vial be briefly centrifuged prior to opening to bring the contents to the bottom. Please reconstitute protein in deionized sterile water to a concentration of 0.1-1.0 mg/mL. We recommend to add 5-50% of glycerol (final concentration) and aliquot for long-term storage at -20°C/-80°C.

 Tel: 1-631-559-9269 1-516-512-3133

 Email: info@creative-biomart.com  Fax: 1-631-938-8127

 45-1 Ramsey Road, Shirley, NY 11967, USA

AA Sequence

AVLGITVALLVWIATLLLVSIWKQIYRSWNLPPGPFPIFFGNIFQLDLKDIPKSLTKLAK
 RFGPVFTLHLGQRRIVVLHGYKAVKEVLLNHKNEFSGRGDIPVFQEYKNKGIIFNNGP
 TWKDVRRFSL SILRDWGMGKQGNEARIQREAHFLVEELKKTGQPFDPFTFLIGCAP
 CNVIADILFNKRFDYDDKKCLELMSLFNENFYLLSTPWIQAYNYFSDYLYLPGSHRK
 VMKNVSEIRQYTLGKAKEHLKSLDINCPDVDCLLIEMEKEKHSQEPMYTMENISVT
 LADLFFAGTETTSTLLRYGLLILMKYPEIEEKLHEEIDRVIGPSRAPAVRDRMNMPYM
 DAVVHEIQRFINLVPSNLPHEATRDTVFRGYVIPKGTVVIPTLDSLLFDNYEFPDPETF
 KPEHFLNENGFKYSDYFKAFSAGKRVCVGEGLARMELFLLSAILQHFNKSLVDP
 KDIDLSPVTIGFGSIPREFKLCVIPRS

GENE INFORMATION

Gene Name [Cyp2e1 cytochrome P450, family 2, subfamily e, polypeptide 1 \[Mus musculus \]](#)

Official Symbol [Cyp2e1](#)

Synonyms CYP2E1; cytochrome P450, family 2, subfamily e, polypeptide 1; cytochrome P450 2E1; CYP1IIE1; cytochrome P450-J; cytochrome P450-ALC; 4-nitrophenol 2-hydroxylase; cytochrome P450, 2e1, ethanol inducible; Cyp2e;

Gene ID [13106](#)

mRNA Refseq [NM_021282](#)

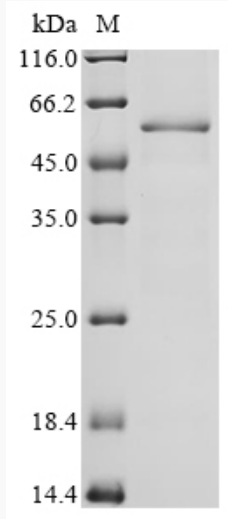
Protein Refseq [NP_067257](#)

 Tel: 1-631-559-9269 1-516-512-3133

 Email: info@creative-biomart.com  Fax: 1-631-938-8127

 45-1 Ramsey Road, Shirley, NY 11967, USA

SDS-PAGE



 Tel: 1-631-559-9269 1-516-512-3133

 Email: info@creative-biomart.com  Fax: 1-631-938-8127

 45-1 Ramsey Road, Shirley, NY 11967, USA