

Recombinant Rat Cyp2e1 protein, His-tagged

Cat. No. Cyp2e1-5704R Lot. No. (See product label)

SPECIFICATION

Product Overview	Recombinant Rat Cyp2e1 aa. (Arg126~Arg309 (Accession # P05182)) fused with N-terminal His tag was produced in E. coli cells.
Species	Rat
Source	E.coli
ProteinLength	Arg126~Arg309
Description	Facilitates hepatocyte sensitization to tumor necrosis factor-alpha (TNF-alpha)-mediated cell death; may play a role in xenobiotic metabolism.
Form	Freeze-dried powder
Molecular Mass	25kDa as determined by SDS-PAGE reducing conditions.
Endotoxin	<1.0EU per 1g (determined by the LAL method)
Purity	>95%
Characteristic	The isoelectric point is 7.1.
Applications	SDS-PAGE; WB; ELISA; IP.
Stability	The thermal stability is described by the loss rate. The loss rate was determined by

 Tel: 1-631-559-9269 1-516-512-3133

 Email: info@creative-biomart.com  Fax: 1-631-938-8127

 45-1 Ramsey Road, Shirley, NY 11967, USA

accelerated thermal degradation test, that is, incubate the protein at 37°C for 48h, and no obvious degradation and precipitation were observed. The loss rate is less than 5% within the expiration date under appropriate storage condition.

Storage

Avoid repeated freeze/thaw cycles. Store at 2-8°C for one month. Aliquot and store at -80°C for 12 months.

Storage buffer

Supplied as lyophilized form in PBS, pH 7.4, containing 5% sucrose.

Reconstitution

Reconstitute in sterile PBS, pH7.2-pH7.4.

GENE INFORMATION

Gene Name

Cyp2e1 cytochrome P450, family 2, subfamily e, polypeptide 1 [*Rattus norvegicus* (Norway rat)]

Official Symbol

Cyp2e1

Synonyms

Cyp2e1; cytochrome P450, family 2, subfamily e, polypeptide 1; Cyp2e; cytochrome P450 2E1; 4-nitrophenol 2-hydroxylase; CYP1IIE1; P450-J; P450RLM6; cytochrome P450 subfamily 2e1 (ethanol-inducible); cytochrome P450, subfamily 2E, polypeptide 1; cytochrome P450-J; cytochrome P450RLM6

Gene ID

25086

mRNA Refseq

NM_031543.1

Protein Refseq

NP_113731.1

UniProt ID

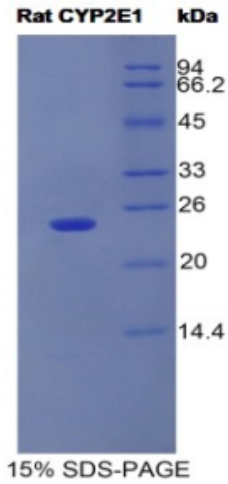
P05182

 Tel: 1-631-559-9269 1-516-512-3133

 Email: info@creative-biomart.com  Fax: 1-631-938-8127

 45-1 Ramsey Road, Shirley, NY 11967, USA

SDS-PAGE



 Tel: 1-631-559-9269 1-516-512-3133

 Email: info@creative-biomart.com  Fax: 1-631-938-8127

 45-1 Ramsey Road, Shirley, NY 11967, USA