

Recombinant Rat Cyp7a1 protein, His & T7-tagged

Cat. No. Cyp7a1-1441R Lot. No. (See product label)

SPECIFICATION

Product Overview	Recombinant Rat Cyp7a1 aa. (Phe109~Lys383 (Accession # P18125)) fused with N-terminal His & T7 tag was produced in E. coli cells.
Species	Rat
Source	E.coli
ProteinLength	Phe109~Lys383
Form	Freeze-dried powder
Molecular Mass	Predicted Molecular Mass: 34.5kDa.
Endotoxin	<1.0EU per 1g (determined by the LAL method).
Purity	>95%
Characteristic	The isoelectric point is 6.9.
Applications	SDS-PAGE; WB; ELISA; IP.
Stability	The thermal stability is described by the loss rate. The loss rate was determined by accelerated thermal degradation test, that is, incubate the protein at 37°C for 48h, and no obvious degradation and precipitation were observed. The loss rate is less than 5% within the expiration date under appropriate storage condition.

 Tel: 1-631-559-9269 1-516-512-3133

 Email: info@creative-biomart.com  Fax: 1-631-938-8127

 45-1 Ramsey Road, Shirley, NY 11967, USA

Storage	Avoid repeated freeze/thaw cycles. Store at 2-8°C for one month. Aliquot and store at -80°C for 12 months.
Storage buffer	Supplied as lyophilized form in PBS, pH7.4, containing 5% trehalose, 0.01% sarcosyl.
Reconstitution	Reconstitute in sterile PBS, pH7.2-pH7.4.

GENE INFORMATION

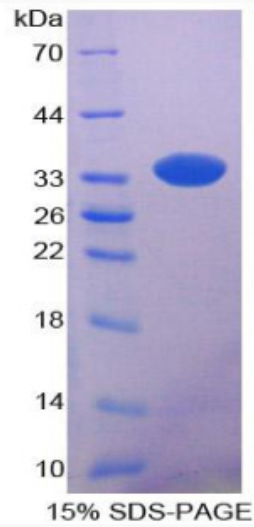
Gene Name	Cyp7a1 cytochrome P450 family 7 subfamily A member 1 [Rattus norvegicus (Norway rat)]
Official Symbol	Cyp7a1
Synonyms	CHAP; CYP7; CYP7S1; CYPVII; cholesterol 7-alpha-hydroxylase; cytochrome P450 (cholesterol hydroxylase 7 alpha); cytochrome P450, 7a1; cytochrome P450, family 7, subfamily a, polypeptide 1; cholesterol 7-alpha-monooxygenase
Gene ID	25428
mRNA Refseq	NM_012942.2
Protein Refseq	NP_037074.1
UniProt ID	P18125

 Tel: 1-631-559-9269 1-516-512-3133

 Email: info@creative-biomart.com  Fax: 1-631-938-8127

 45-1 Ramsey Road, Shirley, NY 11967, USA

SDS-PAGE



 Tel: 1-631-559-9269 1-516-512-3133

 Email: info@creative-biomart.com  Fax: 1-631-938-8127

 45-1 Ramsey Road, Shirley, NY 11967, USA