

Recombinant Mouse Cyr61 Protein, His-tagged

Cat. No. Cyr61-4247M Lot. No. (See product label)

SPECIFICATION

Product Overview	Recombinant Mouse Cyr61(Asp176~Asp379) fused with His tag at N-terminal was expressed in E. coli.
Species	Mouse
Source	E.coli
ProteinLength	Asp176~Asp379
Description	Cyr61 played an important role in many functions.
Form	PBS, pH7.4, containing 0.01% SKL, 1mM DTT, 5% Trehalose and Proclin300
Endotoxin	<1.0EU per 1g (determined by the LAL method)
Purity	> 95%
Applications	Positive Control; Immunogen; SDS-PAGE; WB. If bio-activity of the protein is needed, please check active protein
Storage	The thermal stability is described by the loss rate. The loss rate was determined by accelerated thermal degradation test, that is, incubate the protein at 37 centigrade for 48h, and no obvious degradation and precipitation were observed. The loss rate is less than 5% within the expiration date under appropriate storage condition.

 Tel: 1-631-559-9269 1-516-512-3133

 Email: info@creative-biomart.com  Fax: 1-631-938-8127

 45-1 Ramsey Road, Shirley, NY 11967, USA

Expiry Avoid repeated freeze/thaw cycles. Store at 2-8 centigrade for one month. Aliquot and store at -80 centigrade for 12 months.

Handling Reconstitute in PBS or others.

GENE INFORMATION

Gene Name [Cyr61 cysteine rich protein 61 \[Mus musculus \]](#)

Official Symbol [Cyr61](#)

Synonyms CYR61; cysteine rich protein 61; protein CYR61; 3CH61; IBP-10; IGFBP-10; intermediate early; CCN family member 1; IGF-binding protein 10; cysteine-rich angiogenic inducer 61; insulin-like growth factor binding protein 10; insulin-like growth factor-binding protein 10; CCN1; Igfbp10; AI325051;

Gene ID [16007](#)

mRNA Refseq [NM_010516](#)

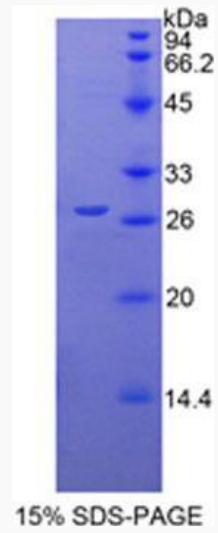
Protein Refseq [NP_034646](#)

UniProt ID [P18406](#)

 Tel: 1-631-559-9269 1-516-512-3133

 Email: info@creative-biomart.com  Fax: 1-631-938-8127

 45-1 Ramsey Road, Shirley, NY 11967, USA



Tel: 1-631-559-9269 1-516-512-3133

Email: info@creative-biomart.com Fax: 1-631-938-8127

45-1 Ramsey Road, Shirley, NY 11967, USA