

Recombinant Human D2HGDH Protein (14-521 aa), His-SUMO-tagged

Cat. No. D2HGDH-1086H Lot. No. (See product label)

SPECIFICATION

Product Overview	Recombinant Human D2HGDH Protein (14-521 aa) is produced by E. coli expression system. This protein is fused with a 6xHis-SUMO tag at the N-terminal. Research Area: Metabolism. Protein Description: Full Length of Mature Protein.
Species	Human
Source	E.coli
ProteinLength	14-521 aa
Description	Catalyzes the oxidation of D-2-hydroxyglutarate to alpha-ketoglutarate.
Form	Tris-based buffer, 50% glycerol
Molecular Mass	70.8 kDa
AA Sequence	LRGAPGAAGSWGRPVGPLARRGCCSAPGTPEVPLTRERYPVRRLPFSTVSKQDLA AFERIVPGGVVTDPEALQAPNVDWLRRLRGCSKVLLRPRTSEEVSHILRHCHERNLA VNPQGGNTGMVGGVSPVFDEIILSTARMNRVLSFHVSILVCGAGCVLEELSRVVE ERDFIMPLDLGAKGSCHIGGNVATNAGGLRFLRYGSLHGTVLGLEVVLDGTVLDCL TSLRKDNTGYDLKQLFIGSEGTLGIITTVSILCPPKRAVNVAFLGCPGFAEVLQTFST CKGMLGEILSAFEMDAVCMQLVGRHLHLASPVQESPFYVLIETSGSNAGHDAEKL GHFLEHALGSGLVTDGTMATDQRKVKMLWALRERITEALSRDGYVYKYDLSLPVER LYDIVTDLRARLGPAAKHVVG YGHLGDGNLHLNVTAEAFSPSLLAALEPHVYEWTAG

 Tel: 1-631-559-9269 1-516-512-3133

 Email: info@creative-biomart.com  Fax: 1-631-938-8127

 45-1 Ramsey Road, Shirley, NY 11967, USA

QQGSVSAEHGVGFRKRDVVLGYSKPPGALQLMQQLKALLDPKGILNPYKTLPSQA

Purity > 90% as determined by SDS-PAGE.

Notes Repeated freezing and thawing is not recommended. Store working aliquots at 4 centigrade for up to one week.

Storage The shelf life is related to many factors, storage state, buffer ingredients, storage temperature and the stability of the protein itself. Generally, the shelf life of liquid form is 6 months at -20 centigrade/-80 centigrade. The shelf life of lyophilized form is 12 months at -20 centigrade/-80 centigrade.

Concentration A hardcopy of COA with concentration instruction is sent along with the products.

GENE INFORMATION

Gene Name D2HGDH D-2-hydroxyglutarate dehydrogenase [Homo sapiens (human)]

Official Symbol D2HGDH

Synonyms D2HGD;

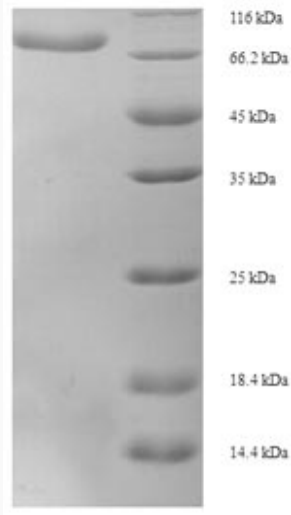
Gene ID 728294

UniProt ID Q8N465

 Tel: 1-631-559-9269 1-516-512-3133

 Email: info@creative-biomart.com  Fax: 1-631-938-8127

 45-1 Ramsey Road, Shirley, NY 11967, USA



(Tris-Glycine gel) Discontinuous SDS-PAGE (reduced) with 5% enrichment gel and 15% separation gel.

 Tel: 1-631-559-9269 1-516-512-3133

 Email: info@creative-biomart.com  Fax: 1-631-938-8127

 45-1 Ramsey Road, Shirley, NY 11967, USA