

# Recombinant Full Length Human D2HGDH Protein, C-Flag-tagged

**Cat. No.** D2HGDH-1752HFL    **Lot. No.** (See product label)

## SPECIFICATION

<b>Product Overview</b>	Recombinant Full Length Human D2HGDH Protein, fused to Flag-tag at C-terminus, was expressed in Mammalian cells.
<b>Species</b>	Human
<b>Source</b>	Mammalian Cells
<b>Description</b>	This gene encodes D-2hydroxyglutarate dehydrogenase, a mitochondrial enzyme belonging to the FAD-binding oxidoreductase/transferase type 4 family. This enzyme, which is most active in liver and kidney but also active in heart and brain, converts D-2-hydroxyglutarate to 2-ketoglutarate. Mutations in this gene are present in D-2-hydroxyglutaric aciduria, a rare recessive neurometabolic disorder causing developmental delay, epilepsy, hypotonia, and dysmorphic features.
<b>Form</b>	25 mM Tris HCl, pH 7.3, 100 mM glycine, 10% glycerol.
<b>Molecular Mass</b>	54.8 kDa
<b>AA Sequence</b>	MLPRRPLAWPAWLLRGAPGAAGSWGPRVGPLARRGCCSAPGTPEVPLTRERYPV QRLPFSTVSKQDLAAF ERIVPGGVVTDPEALQAPNVDWLRTLGRGCSKVLLRPRTSE EVSHILRHCHERNLAVNPQGGNTGMVGGSV PVFDEIILSTARMNRVLSFHVSIGILV CQAGCVLEELSRVVEERDFIMPLDLGAKGSCHIGGNVATNAGG LRFLRYGSLHGTV LGLEVVLDGTVLDCLTSLRKDNTGYDLKQLFIGSEGTLGIITTVSILCPPKPRAVN VA FLGCPGFAEVLQTFSTCKGMLGEILSAFEFMDAVCMQLVGRHLHLASPVQESPFYV

 Tel: 1-631-559-9269    1-516-512-3133

 Email: [info@creative-biomart.com](mailto:info@creative-biomart.com)     Fax: 1-631-938-8127

 45-1 Ramsey Road, Shirley, NY 11967, USA

LIETSGSNAGHD AEKLGHFLEHALGSGGLVTDGTMATDQRKVKMLWALRERITEALS  
 RDGYVYKYDLSLPVERLYDIVTDLRA RLGPHAKHVVGYGHLGDGNLHLNVTAEAFS  
 PSLLAALEPHVYEWTAGQQGSVSAEHGVGFRKRDLVGYSK  
 PPGALQLMQQLKALLDPKGILNPKYKTLPSQATRTRPLEQKLISEEDLAANDILDYKDD  
 DDKV

**Purity** > 80% as determined by SDS-PAGE and Coomassie blue staining.

**Stability** Stable for 12 months from the date of receipt of the product under proper storage and handling conditions. Avoid repeated freeze-thaw cycles.

**Storage** Store at -80 centigrade.

**Concentration** >50 ug/mL as determined by microplate BCA method.

**Preparation** Recombinant protein was captured through anti-DDK affinity column followed by conventional chromatography steps.

**Full Length** Full L.

## GENE INFORMATION

**Gene Name** D2HGDH D-2-hydroxyglutarate dehydrogenase [ Homo sapiens (human) ]

**Official Symbol** D2HGDH

**Synonyms** D2HGD

**Gene ID** 728294

**mRNA Refseq** NM\_152783.5

 Tel: 1-631-559-9269 1-516-512-3133

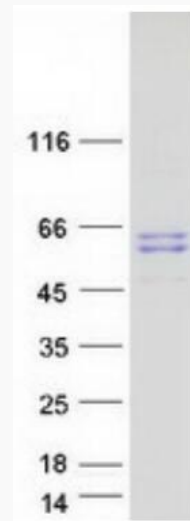
 Email: [info@creative-biomart.com](mailto:info@creative-biomart.com)  Fax: 1-631-938-8127

 45-1 Ramsey Road, Shirley, NY 11967, USA

**Protein Refseq** NP\_689996.4

**MIM** 609186

**UniProt ID** Q8N465



Coomassie blue staining of purified D2HGDH protein.

 Tel: 1-631-559-9269 1-516-512-3133

 Email: [info@creative-biomart.com](mailto:info@creative-biomart.com)  Fax: 1-631-938-8127

 45-1 Ramsey Road, Shirley, NY 11967, USA