

Recombinant Human D2HGDH Protein, Myc/DDK-tagged, C13 and N15-labeled

Cat. No. D2HGDH-627H **Lot. No.** (See product label)

SPECIFICATION

Product Overview	D2HGDH MS Standard C13 and N15-labeled recombinant protein (NP_689996) with a C-terminal MYC/DDK tag, was expressed in HEK293 cells.
Species	Human
Source	HEK293
Description	This gene encodes D-2hydroxyglutarate dehydrogenase, a mitochondrial enzyme belonging to the FAD-binding oxidoreductase/transferase type 4 family. This enzyme, which is most active in liver and kidney but also active in heart and brain, converts D-2-hydroxyglutarate to 2-ketoglutarate. Mutations in this gene are present in D-2-hydroxyglutaric aciduria, a rare recessive neurometabolic disorder causing developmental delay, epilepsy, hypotonia, and dysmorphic features.
Molecular Mass	56.4 kDa
AA Sequence	MLPRRPLAWPAWLLRGAPGAAGSWGPRVGPLARRGCCSAPGTPEVPLTRERYPV QRLPFSTVSKQDLAAFERIVPGGVVTDPEALQAPNVDWLRTRLRGCSKVLLRPRTSE EVSHILRHCHERNLAVNPQGGNTGMVGGSVPVFDEIILSTARMNRVLSFHSVSGILV CQAGCVLEELSRVVEERDFIMPLDLGAKGSCHIGGNVATNAGGLRFLRYGSLHGTV LGLEVVADGTVLDCLTSLRKDNTGYDLKQLFIGSEGTLGIITTVSILCPPKPRAVNVA FLGCPGFAEVLQTFSTCKGMLGEILSAFEFMDAVCMQLVGRHLHLASPVQESPFYV LIETSGSNAGHDAEKLGHFLEHALGSGLVTDGTMATDQRKVKMLWALRERITEALSR

 Tel: 1-631-559-9269 1-516-512-3133

 Email: info@creative-biomart.com  Fax: 1-631-938-8127

 45-1 Ramsey Road, Shirley, NY 11967, USA

DGYVYKYDLSLPVERLYDIVTDLRARLGPHAKHVVGYGHLGDGNLHLNVTAEAFSPS
 LLAALPHVYEWTAGQQGSVSAEHGVGFRKRDVLGYSKPPGALQLMQQLKALLDP
 KGILNPYKTLPSQATRTRPLEQKLISEEDLAANDILDYKDDDDKV

Purity > 80% as determined by SDS-PAGE and Coomassie blue staining

Stability Stable for 3 months from receipt of products under proper storage and handling conditions.

Storage Store at -80 centigrade. Avoid repeated freeze-thaw cycles.

Concentration 50 µg/mL as determined by BCA

Storage Buffer 100 mM glycine, 25 mM Tris-HCl, pH 7.3.

GENE INFORMATION

Gene Name [D2HGDH D-2-hydroxyglutarate dehydrogenase \[Homo sapiens \(human\) \]](#)

Official Symbol [D2HGDH](#)

Synonyms D2HGDH; D-2-hydroxyglutarate dehydrogenase; D2HGD; D-2-hydroxyglutarate dehydrogenase, mitochondrial; EC 1.1.99.-

Gene ID [728294](#)

mRNA Refseq [NM_152783](#)

Protein Refseq [NP_689996](#)

MIM [609186](#)

 Tel: 1-631-559-9269 1-516-512-3133

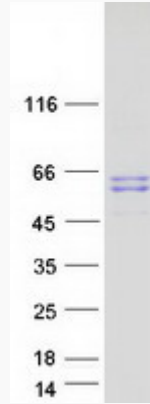
 Email: info@creative-biomart.com  Fax: 1-631-938-8127

 45-1 Ramsey Road, Shirley, NY 11967, USA

UniProt ID

Q8N465

SDS-PAGE



 Tel: 1-631-559-9269 1-516-512-3133

 Email: info@creative-biomart.com  Fax: 1-631-938-8127

 45-1 Ramsey Road, Shirley, NY 11967, USA