

## Recombinant Zebrafish D2HGDH Protein (56-533 aa), His-SUMO-tagged

**Cat. No.** D2HGDH-969D    **Lot. No.** (See product label)

### SPECIFICATION

<b>Product Overview</b>	Recombinant Danio rerio (Zebrafish) (Brachydanio rerio) D2HGDH Protein (56-533 aa) is produced by E. coli expression system. This protein is fused with a 6xHis-SUMO tag at the N-terminal. Protein Description: Full Length of Mature Protein.
<b>Species</b>	Zebrafish
<b>Source</b>	E.coli
<b>ProteinLength</b>	56-533 aa
<b>Description</b>	Catalyzes the oxidation of D-2-hydroxyglutarate to alpha-ketoglutarate.
<b>Form</b>	Tris-based buffer, 50% glycerol
<b>Molecular Mass</b>	68.3 kDa
<b>AA Sequence</b>	ANPANPSAAPPRLPFSRVTQEDLSFFRALLPGRITITDPDLLKSSNVDWLKTVQGSSD VLLRPKTTEGVSQILRYCNERNLAVCPQGGNTGLVGGSVPFDEIILSTSLMNQVFA FDNISGILTCQAGCVLENLSHYLEERDFIMPLDLGAKGSCHIGGNVSTNAGGLRLLRY GSLRGTVLGLEVVADGHVLNCLATLRKDNTGYDLKQLFIGSEGTLGVITAVSILCPR KPKAVNVAFLGCSSFQQLLETFQCCRGMLGEILSAFEFLDASCMNLLKHLKLTNPIT ECPFYIVIETAGSNATHDEEKLHQFLEEVMTSSLVTDGTVATEATKIKALWSLRERV EALTHEGYTYKYDISLPVEKIYDLVQDMRRHLGGMAKNVVG YGHVGDGNLHLNITSP SKDFDLLAAIEPYVYEWTSQWKGSISAEHGLGLKKNYIYYSKPSEAVALMGSIKAM

 Tel: 1-631-559-9269    1-516-512-3133

 Email: [info@creative-biomart.com](mailto:info@creative-biomart.com)     Fax: 1-631-938-8127

 45-1 Ramsey Road, Shirley, NY 11967, USA

LDPKGILNPYKTLPDNIN

**Purity** > 90% as determined by SDS-PAGE.

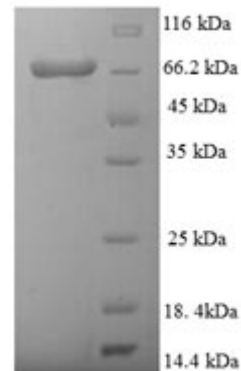
**Notes** Repeated freezing and thawing is not recommended. Store working aliquots at 4 centigrade for up to one week.

**Storage** The shelf life is related to many factors, storage state, buffer ingredients, storage temperature and the stability of the protein itself. Generally, the shelf life of liquid form is 6 months at -20 centigrade/-80 centigrade. The shelf life of lyophilized form is 12 months at -20 centigrade/-80 centigrade.

**Concentration** A hardcopy of COA with concentration instruction is sent along with the products.

## GENE INFORMATION

**UniProt ID** [A1L258](#)



(Tris-Glycine gel) Discontinuous SDS-PAGE (reduced) with 5% enrichment gel and

 Tel: 1-631-559-9269 1-516-512-3133

 Email: [info@creative-biomart.com](mailto:info@creative-biomart.com)  Fax: 1-631-938-8127

 45-1 Ramsey Road, Shirley, NY 11967, USA



15% separation gel.

 Tel: 1-631-559-9269 1-516-512-3133

 Email: [info@creative-biomart.com](mailto:info@creative-biomart.com)  Fax: 1-631-938-8127

 45-1 Ramsey Road, Shirley, NY 11967, USA