

Recombinant Human DAB1 Protein, GST-tagged

Cat. No. DAB1-2314H **Lot. No.** (See product label)

SPECIFICATION

Product Overview	Human DAB1 full-length ORF (AAH67445.1, 1 a.a. - 553 a.a.) recombinant protein with GST-tag at N-terminal.
Species	Human
Source	Wheat Germ
Description	The laminar organization of multiple neuronal types in the cerebral cortex is required for normal cognitive function. In mice, the disabled-1 gene plays a central role in brain development, directing the migration of cortical neurons past previously formed neurons to reach their proper layer. This gene is similar to disabled-1, and the protein encoded by this gene is thought to be a signal transducer that interacts with protein kinase pathways to regulate neuronal positioning in the developing brain. [provided by RefSeq, Jan 2017]
Molecular Mass	86 kDa
AA Sequence	MSTETELQVAVKTSAKKDSRKKGQDRSEATLIKRFKGGVRYKAKLIGIDEVSAARG DKLCQDSMMKLKGVVAGARSKGEHKQKIFLTISFGGIKIFDEKTGALQHHHAVHEISY IAKDITDHRAFGYVCGKEGNHRFVAIKTAQAAEPVILDLRDLFQLIYELKQREELEKKA QKDKQCEQAVYQVPTSQKKEGVYDVPKSPVSNQSYFEDFEERFAAATPNRNLPT DFDEIFEATKAVTQLELFGDMSTPPDITSPPTPATPGDAFIPSSSQTLPASADVFSV PFGTAAVPSGYVAMGAVLPSFWGQQPLVQQQMVMGAQPPVAQVMPGAQPIAWG QPGLFPATQQPWPTVAGQFPPAAFMPQTVMPLPAAMFQGPLTPLATVPGTSDST

 Tel: 1-631-559-9269 1-516-512-3133

 Email: info@creative-biomart.com  Fax: 1-631-938-8127

 45-1 Ramsey Road, Shirley, NY 11967, USA

RSSPQTDKPRQKMGKETFKDFQMAQPPPVPSRKPDQPSLTCTSEAFSSYFNKVGVAQDTDDCDDFDISQLNLTPVTSTTPSTNSPPTPAPRQSSPSKSSASHASDPTTDDIFEEGFESPSKSEEQEAPDGSQASSNSDPFGEPSPGEGPSGDNISPQAGS

Applications	Enzyme-linked Immunoabsorbent Assay Western Blot (Recombinant protein) Antibody Production Protein Array
Notes	Best use within three months from the date of receipt of this protein.
Storage	Store at -80 centigrade. Aliquot to avoid repeated freezing and thawing.
Storage Buffer	50 mM Tris-HCl, 10 mM reduced Glutathione, pH=8.0 in the elution buffer.

GENE INFORMATION

Gene Name	DAB1 disabled homolog 1 (Drosophila) [Homo sapiens]
Official Symbol	DAB1
Synonyms	DAB1; disabled homolog 1 (Drosophila); disabled (Drosophila) homolog 1; disabled homolog 1;
Gene ID	1600
mRNA Refseq	NM_021080
Protein Refseq	NP_066566
MIM	603448

 Tel: 1-631-559-9269 1-516-512-3133

 Email: info@creative-biomart.com  Fax: 1-631-938-8127

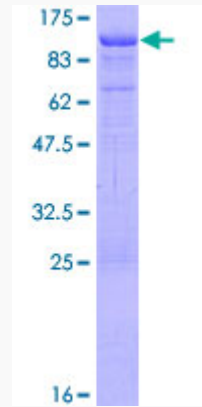
 45-1 Ramsey Road, Shirley, NY 11967, USA

UniProt ID

O75553

Quality Control

Testing:



12.5% SDS-PAGE Stained with Coomassie Blue.

 Tel: 1-631-559-9269 1-516-512-3133

 Email: info@creative-biomart.com  Fax: 1-631-938-8127

 45-1 Ramsey Road, Shirley, NY 11967, USA