

Recombinant Human DAB2 Protein, GST-tagged

Cat. No. DAB2-2315H **Lot. No.** (See product label)

SPECIFICATION

Product Overview	Human DAB2 full-length ORF (AAH03064, 1 a.a. - 770 a.a.) recombinant protein with GST-tag at N-terminal.
Species	Human
Source	Wheat Germ
Description	This gene encodes a mitogen-responsive phosphoprotein. It is expressed in normal ovarian epithelial cells, but is down-regulated or absent from ovarian carcinoma cell lines, suggesting its role as a tumor suppressor. This protein binds to the SH3 domains of GRB2, an adaptor protein that couples tyrosine kinase receptors to SOS (a guanine nucleotide exchange factor for Ras), via its C-terminal proline-rich sequences, and may thus modulate growth factor/Ras pathways by competing with SOS for binding to GRB2. Alternatively spliced transcript variants encoding different isoforms have been found for this gene. [provided by RefSeq, Oct 2011]
Molecular Mass	110.22 kDa
AA Sequence	MSNEVETSATNGQPDPQQAAPKAPSKKEKKGPEKTDEYLLARFKGDGVKYKAKLIG IDVDPDARGDKMSQDSMMKLGMAAAGRSQGQHKQRIWVNISLSGIKIIDEKTVIE HEHPVNKISFIARDVTDNRAFGYVCGGEGQHQFFAIKTGQQAEPVLDLKDQVY NVKKKEEEEKIEEASKAVENGSEALMILDDQTNKLKSGVDQMDLFGDMSTPPDLN SPTESKDILLVDLNSEIDTNQNSLRENPFITNGITSCSLPRPTPQASFLPENAFSANLN FFPTPNPDPFRDDPFTQPDQSTPSSFDLSPDQKKNSSSSSTPLSNGPLNGDVD

 Tel: 1-631-559-9269 1-516-512-3133

 Email: info@creative-biomart.com  Fax: 1-631-938-8127

 45-1 Ramsey Road, Shirley, NY 11967, USA

YFGQQFDQISNRTGKQEAQAGPWPFSSTQTPAVRTQNGVSEREQNGFSVKSSP
 NPFVGSPPKGLSIQNGVKQDLESSVQSSPHDSIAIIPPPQSTKPGRGRRTAKSSAND
 LLASDIFAPPVSEPSGQASPTGQPTALQPNPLDLFKTSAPAPVGPLVGLGGVTVTLP
 QAGPWNTASLVFNQSPSMAPGAMMGQPSGFSQPVIFGTSPAVSGWNQPSFFAA
 STPPPVPVWGPSASVAPNAWSTTSPLGNPFQSNIFPAPAVSTQPPSMHSSLLVTP
 PQPPPFRAGPPKDISSDAFTALDPLGDKEIKDVKEMFKDFQLWQPPAVPARKGEQTS
 SGTLSAFASYFNKVGIPQENADHDDFDANQLLNKINEPPKPAPRQVSLPVTKSTDN
 AFENPFFKDSFGSSQASVASSQPVSSSEMYRDPFGNPFA

Applications

Enzyme-linked Immunoabsorbent Assay
 Western Blot (Recombinant protein)
 Antibody Production
 Protein Array

Notes

Best use within three months from the date of receipt of this protein.

Storage

Store at -80 centigrade. Aliquot to avoid repeated freezing and thawing.

Storage Buffer

50 mM Tris-HCl, 10 mM reduced Glutathione, pH=8.0 in the elution buffer.

GENE INFORMATION

Gene Name

DAB2 disabled homolog 2, mitogen-responsive phosphoprotein (Drosophila) [Homo sapiens]

Official Symbol

DAB2

Synonyms

DAB2; disabled homolog 2, mitogen-responsive phosphoprotein (Drosophila); disabled (Drosophila) homolog 2 (mitogen responsive phosphoprotein); disabled homolog 2; DOC 2; differentially-expressed protein 2; DOC2; DOC-2; FLJ26626;

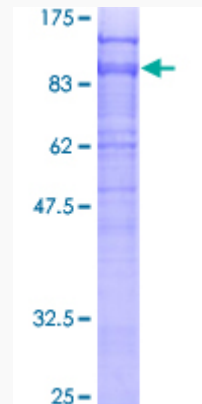
 Tel: 1-631-559-9269 1-516-512-3133

 Email: info@creative-biomart.com  Fax: 1-631-938-8127

 45-1 Ramsey Road, Shirley, NY 11967, USA

Gene ID	1601
mRNA Refseq	NM_001244871
Protein Refseq	NP_001231800
MIM	601236
UniProt ID	P98082

**Quality Control
Testing:**



12.5% SDS-PAGE Stained with Coomassie Blue.

 Tel: 1-631-559-9269 1-516-512-3133

 Email: info@creative-biomart.com  Fax: 1-631-938-8127

 45-1 Ramsey Road, Shirley, NY 11967, USA