

Recombinant Human DARS2 Protein, GST-tagged

Cat. No. DARS2-2350H Lot. No. (See product label)

SPECIFICATION

Product Overview	Human DARS2 full-length ORF (NP_060592.2, 1 a.a. - 645 a.a.) recombinant protein with GST-tag at N-terminal.
Species	Human
Source	Wheat Germ
Description	The protein encoded by this gene belongs to the class-II aminoacyl-tRNA synthetase family. It is a mitochondrial enzyme that specifically aminoacylates aspartyl-tRNA. Mutations in this gene are associated with leukoencephalopathy with brainstem and spinal cord involvement and lactate elevation (LBSL). [provided by RefSeq, Nov 2009]
Molecular Mass	100 kDa
AA Sequence	<p>MYFPSWLSQLYRGLSRPIRRTTQPIWGSLYRSLQSSQRRRIPEFSSFVVRTNTCGEL RSSH LGQEVTL CGW IQYRRQNTFLVLRDFDGLVQVIIPQDESAASVKKILCEAPVESV VQVSGTVISRPAGQENPKMPTGEIEIKVKTAE LLNACKKLPFEIKNFVKKTEALRLQY RYLDLRSFQM QYNLRLRSQMVMKMREYLCNLHGFVDIETPTLFKRTPGGAKEFLVP SREPGKFYSLPQSPQQFKQLLMVGGLDRYFQVARCYRDEGSRPDRQPEFTQIDIEM SFVDQTGIQSLIEGLLQYSWPNDKDPVVVPFPTMTFAEVLATYGTDKPDTRFGMKIID ISDVFRNTEIGFLQDALSKPHGTVKAICIEGAKYLKRKDIESIRNFAADHFNQEILPVF LNANRNWNSPVANFIMESQRLELIRLMETQEEDVLLTAGEHNKACSL LGKLRLECA DLLETRGVVLRDPTLFSFLWVVD FPLFLPKEENPRELESAHHPFTAPHPSDIHLLYTE</p>

 Tel: 1-631-559-9269 1-516-512-3133

 Email: info@creative-biomart.com  Fax: 1-631-938-8127

 45-1 Ramsey Road, Shirley, NY 11967, USA

PKKARSQHYDLVLNGNEIGGGSIRIHNAELQRYILATLLKEDVKMLSHLLQALDYGAP
PHGGIALGLDRLICLVGTGSPSIRDVIAFPKSFGRGHDLMSNTPDPSVPPEELKPYHIRVSK
PTDSKAERAH

Applications	Enzyme-linked Immunoabsorbent Assay Western Blot (Recombinant protein) Antibody Production Protein Array
Notes	Best use within three months from the date of receipt of this protein.
Storage	Store at -80 centigrade. Aliquot to avoid repeated freezing and thawing.
Storage Buffer	50 mM Tris-HCl, 10 mM reduced Glutathione, pH=8.0 in the elution buffer.

GENE INFORMATION

Gene Name	DARS2 aspartyl-tRNA synthetase 2, mitochondrial [Homo sapiens]
Official Symbol	DARS2
Synonyms	DARS2; aspartyl-tRNA synthetase 2, mitochondrial; aspartate--tRNA ligase, mitochondrial; aspartate tRNA ligase 2; mitochondrial; FLJ10514; aspartate tRNA ligase 2, mitochondrial; aspartyl-tRNA synthetase, mitochondrial; LBSL; ASPRS; MT-ASPRS; RP3-383J4.2;
Gene ID	55157
mRNA Refseq	NM_018122
Protein Refseq	NP_060592

Tel: 1-631-559-9269 1-516-512-3133

Email: info@creative-biomart.com Fax: 1-631-938-8127

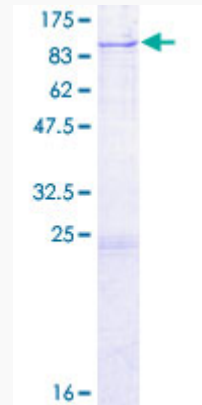
45-1 Ramsey Road, Shirley, NY 11967, USA

MIM 610956

UniProt ID Q6PI48

Quality Control

Testing:



12.5% SDS-PAGE Stained with Coomassie Blue.

 Tel: 1-631-559-9269 1-516-512-3133

 Email: info@creative-biomart.com  Fax: 1-631-938-8127

 45-1 Ramsey Road, Shirley, NY 11967, USA