

# Recombinant Full Length Human DCAF11 Protein, C-Flag-tagged

**Cat. No.** DCAF11-1795HFL    **Lot. No.** (See product label)

## SPECIFICATION

<b>Product Overview</b>	Recombinant Full Length Human DCAF11 Protein, fused to Flag-tag at C-terminus, was expressed in Mammalian cells.
<b>Species</b>	Human
<b>Source</b>	Mammalian Cells
<b>Description</b>	This gene encodes a WD repeat-containing protein that interacts with the COP9 signalosome, a macromolecular complex that interacts with cullin-RING E3 ligases and regulates their activity by hydrolyzing cullin-Nedd8 conjugates. Multiple alternatively spliced transcript variants have been found for this gene.
<b>Form</b>	25 mM Tris HCl, pH 7.3, 100 mM glycine, 10% glycerol.
<b>Molecular Mass</b>	61.5 kDa
<b>AA Sequence</b>	<p>MGSRNSSSAGSGSGDPSEGLPRRGAGLRRSEEEEEDEDEDVLAQVLAYLLRRGQV            RLVQGGGAANLQFIQ ALLDSEEENDRAWDGRLGDRYNPPVDATPDTRELEFNEIKT            QVELATGQLGLRRAAQKHSFPRMLHQRER GLCHRGSFSLGEQSRVISHFLPNDLG            FTDSYSQKAFCGIYSKDGQIFMSACQDQTIRLYDCRYGRFHKFK SIKARDVGWSVL            DVAFTPDGNHFLYSSWSDYIHICNIYGEGDHTALDLRPDERRFAVFSIAVSSDGRE            V LGGANDGCLYVFDREQNRRTLQIESHEDDVNAVAFADISSQILFSGGDDAICKVW            DRRTMREDDPKPVGA LAGHQDGITFIDSKGDARYLISNSKDQTIKLWDIRRFSSREG            MEASRQAATQQNWDYRWQQVPPKAWRKL KLPGDSSLMTYRGHGVLHTLIRCRFS</p>

 Tel: 1-631-559-9269    1-516-512-3133

 Email: [info@creative-biomart.com](mailto:info@creative-biomart.com)     Fax: 1-631-938-8127

 45-1 Ramsey Road, Shirley, NY 11967, USA

PIHSTGQQFIYSGCSTGKVVVYDLLSGHIVKCLTNHKACVRDVS WHPFEEKIVSSSW  
 DGNLRLWQYRQAEYFQDDMPSEEECASAPAPVPSSTPFSSPQ TRTRPLEQKLIS  
 EEDLAANDILDYKDDDDKV

**Purity** > 80% as determined by SDS-PAGE and Coomassie blue staining.

**Stability** Stable for 12 months from the date of receipt of the product under proper storage and handling conditions. Avoid repeated freeze-thaw cycles.

**Storage** Store at -80 centigrade.

**Concentration** >50 ug/mL as determined by microplate BCA method.

**Preparation** Recombinant protein was captured through anti-DDK affinity column followed by conventional chromatography steps.

**Full Length** Full L.

## GENE INFORMATION

**Gene Name** DCAF11 DDB1 and CUL4 associated factor 11 [ Homo sapiens (human) ]

**Official Symbol** DCAF11

**Synonyms** GL014; WDR23; PRO2389

**Gene ID** 80344

**mRNA Refseq** NM\_025230.5

**Protein Refseq** NP\_079506.3

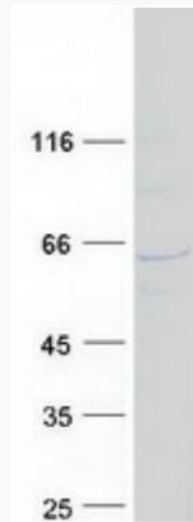
 Tel: 1-631-559-9269 1-516-512-3133

 Email: [info@creative-biomart.com](mailto:info@creative-biomart.com)  Fax: 1-631-938-8127

 45-1 Ramsey Road, Shirley, NY 11967, USA

MIM 613317

UniProt ID Q8TEB1



Coomassie blue staining of purified DCAF11 protein.

 Tel: 1-631-559-9269 1-516-512-3133

 Email: [info@creative-biomart.com](mailto:info@creative-biomart.com)  Fax: 1-631-938-8127

 45-1 Ramsey Road, Shirley, NY 11967, USA