

Recombinant Human DCBLD2 Protein, His-tagged

Cat. No. DCBLD2-1780H Lot. No. (See product label)

SPECIFICATION

Product Overview	Recombinant Human DCBLD2 protein(Gln67-Ala528), fused with C-terminal His tag, was expressed in HEK293.
Species	Human
Source	HEK293
ProteinLength	Gln67-Ala528
Tag	C-His
Form	Liquid in sterile PBS, pH7.4.
Molecular Mass	The protein has a calculated MW of 52 kDa.
Endotoxin	<1.0EU per 1µg (determined by the LAL method).
Purity	> 90 % as determined by SDS-PAGE.
Storage	Store it under sterile conditions at -20 to -80°C. It is recommended that the protein be aliquoted for optimal storage. Avoid repeated freeze-thaw cycles.
Concentration	0.73 mg/ml. Centrifuge the vial at 4°C before opening to recover the entire contents.
Reconstitution	It is recommended that sterile water be added to the vial to prepare a stock solution of

 Tel: 1-631-559-9269 1-516-512-3133

 Email: info@creative-biomart.com  Fax: 1-631-938-8127

 45-1 Ramsey Road, Shirley, NY 11967, USA

0.2 ug/ul. Centrifuge the vial at 4°C before opening to recover the entire contents.

AA Sequence

QQGDGCGHTVLGPESGTLTSINYPQTYPNSTVCEWEIRVKMGERVRIKFGDFDIED
 SDSCHFNYLRIYNGIGVSRTEIGKYCGLGLQMNHSIESKGNITLLFMSGIHVSGRGF
 LASYSVIDKQDLITCLDTASNFLPEPEFSKYCPAGCLLPFAEISGTIPHGYPDSSPLCMA
 GVHAGVVSNTLGGQISVVISKGIPYYESSLANNVTSVVGHLSTSLFTFKTSGCYGTLG
 MESGVIADPQITASSVLEWTDHTGQENSWKPKKARLKKPGPPWAAFATDEYQWLQI
 DLNKEKKITGIITTGSTMVEHNYVVSAYRILYSDDGQKWTVYREPGVEQDKIFQGNK
 DYHQDVRNNFLPPIIARFIRVNPTQWQQKIAMKMELLGCQFIPKGRPPKLTQPPPPR
 NSNDLKNTTAPPKIAKGRAPKFTQPLQPRSSNEFPAQTEQTTASPDIRNTTVTPNVT
 KDVAHHHHHHHHHHH

GENE INFORMATION

Gene Name [DCBLD2 discoidin, CUB and LCCL domain containing 2 \[Homo sapiens \]](#)

Official Symbol [DCBLD2](#)

Synonyms

DCBLD2; discoidin, CUB and LCCL domain containing 2; discoidin, CUB and LCCL
 domain-containing protein 2; CLCP1; ESDN; 1700055P21Rik; coagulation factor
 V/VIII-homology domains protein 1; CUB, LCCL and coagulation factor V/VIII-
 homology domains protein 1; endothelial and smooth muscle cell-derived neuropilin-
 like protein;

Gene ID [131566](#)

mRNA Refseq [NM_080927](#)

Protein Refseq [NP_563615](#)

MIM [608698](#)

 Tel: 1-631-559-9269 1-516-512-3133

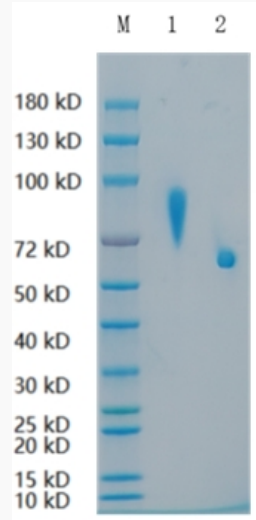
 Email: info@creative-biomart.com  Fax: 1-631-938-8127

 45-1 Ramsey Road, Shirley, NY 11967, USA

UniProt ID

Q96PD2

SDS-PAGE



Lane 1: DCBLD2-1780H; Lane 2: BSA

 Tel: 1-631-559-9269 1-516-512-3133

 Email: info@creative-biomart.com  Fax: 1-631-938-8127

 45-1 Ramsey Road, Shirley, NY 11967, USA