

## Recombinant Human DCBLD2 Protein, GST-tagged

Cat. No. DCBLD2-2385H Lot. No. (See product label)

### SPECIFICATION

<b>Product Overview</b>	Human DCBLD2 full-length ORF ( NP_563615.3, 1 a.a. - 775 a.a.) recombinant protein with GST-tag at N-terminal.
<b>Species</b>	Human
<b>Source</b>	Wheat Germ
<b>Description</b>	DCBLD2 (Discoidin, CUB And LCCL Domain Containing 2) is a Protein Coding gene. Diseases associated with DCBLD2 include X-Linked Nonsyndromic Deafness and Diverticulitis. Among its related pathways are Neuroscience. An important paralog of this gene is DCBLD1.
<b>Molecular Mass</b>	111.4 kDa
<b>AA Sequence</b>	MASRAVVRARRCPQCPQVRAAAAAPAWAALPLSRSLPPCSNSSFMSPLFLLLLLV LLLLLEDAGAQQGDGCGHTVLGPESGTLTSINYPQTYPNSTVCEWEIRVKMGERVRI KFGDFDIEDSDSCHFNYLRIYNGIGVSRTEIGKYCGLGLQMNHSIESKGNITLLFMS GIHVSGRGLASYSVIDKQDLITCLDTASNLEPEFSKYCPAGCLLPFAEISGTIPHG RDSSPLCMAGVHAGVVSNTLGGQISVVISKGIPYYESSLANNVTSVVGHLSTSLFTFK TSGCYGTLGMESGVIADPQITASSVLEWTDHTGQENSWKPKKARLKKPGPPWAAF ATDEYQWLQIDLNKEKKITGIITGSTMVEHNYYSAYRILYSDDGQKWTVYREPGV EQDKIFQGNKDYHQDVRNNFLPPIIARFIRVNPTQWQQKIAMKMELLGCQFIPKGRP PKLTQPPPPRNSNDLKNNTTAPPKIAKGRAPKFTQPLQPRSSNEFPAQTEQTASPDI RNTTVTPNVTKDVALAAVLVPVLMVLTLLILVCAWHWRNRKKKTEGTYDLPYWD

 Tel: 1-631-559-9269 1-516-512-3133

 Email: [info@creative-biomart.com](mailto:info@creative-biomart.com)  Fax: 1-631-938-8127

 45-1 Ramsey Road, Shirley, NY 11967, USA

RAGWWKGMKQFLPAKAVDHEETPVRYSSSEVNHLSPREVTTVLQADSAEYAQPLV  
 GGIVGTLHQRSTFKPEEGKEAGYADLDPYNSPGQEVYHAYAELPITGPEYATPIIM  
 DMSGHPTTSVGQPSTSTFKATGNQPPPLVGTYNLLSRTDSCSSAQAQYDTPKAG  
 KPGLPAPDELVYQVPQSTQEVSGAGRDGECDFKEIL

<b>Applications</b>	Enzyme-linked Immunoabsorbent Assay Western Blot (Recombinant protein) Antibody Production Protein Array
<b>Notes</b>	Best use within three months from the date of receipt of this protein.
<b>Storage</b>	Store at -80 centigrade. Aliquot to avoid repeated freezing and thawing.
<b>Storage Buffer</b>	50 mM Tris-HCl, 10 mM reduced Glutathione, pH=8.0 in the elution buffer.

## GENE INFORMATION

<b>Gene Name</b>	DCBLD2 discoidin, CUB and LCCL domain containing 2 [ Homo sapiens ]
<b>Official Symbol</b>	DCBLD2
<b>Synonyms</b>	DCBLD2; discoidin, CUB and LCCL domain containing 2; discoidin, CUB and LCCL domain-containing protein 2; CLCP1; ESDN; 1700055P21Rik; coagulation factor V/VIII-homology domains protein 1; CUB, LCCL and coagulation factor V/VIII-homology domains protein 1; endothelial and smooth muscle cell-derived neuropilin-like protein;
<b>Gene ID</b>	131566
<b>mRNA Refseq</b>	NM_080927

 Tel: 1-631-559-9269 1-516-512-3133

 Email: [info@creative-biomart.com](mailto:info@creative-biomart.com)  Fax: 1-631-938-8127

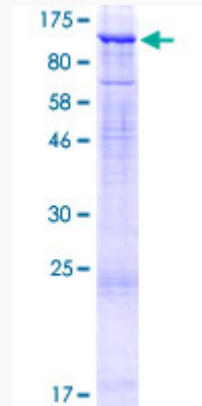
 45-1 Ramsey Road, Shirley, NY 11967, USA

**Protein Refseq** NP\_563615

**MIM** 608698

**UniProt ID** Q96PD2

**Quality Control  
Testing:**



12.5% SDS-PAGE Stained with Coomassie Blue.

 Tel: 1-631-559-9269 1-516-512-3133

 Email: [info@creative-biomart.com](mailto:info@creative-biomart.com)  Fax: 1-631-938-8127

 45-1 Ramsey Road, Shirley, NY 11967, USA