

Recombinant Human DCDC2 Protein, GST-tagged

Cat. No. DCDC2-2389H Lot. No. (See product label)

SPECIFICATION

Product Overview	Human DCDC2 full-length ORF (AAH50704.1, 1 a.a. - 476 a.a.) recombinant protein with GST-tag at N-terminal.
Species	Human
Source	Wheat Germ
Description	This gene encodes a doublecortin domain-containing family member. The doublecortin domain has been demonstrated to bind tubulin and enhance microtubule polymerization. This family member is thought to function in neuronal migration where it may affect the signaling of primary cilia. Mutations in this gene have been associated with reading disability (RD) type 2, also referred to as developmental dyslexia. Alternatively spliced transcript variants encoding the same protein have been found for this gene. [provided by RefSeq, Jan 2013]
Molecular Mass	78.1 kDa
AA Sequence	MSGSSARSSHLSQPVVKSVLVYRNGDPFYAGRRVVIHEKKVSSFEVFLKEVTGGVQ APFGAVRNIYTPRTHRIRKLDQIQSGGNYVAGGQEAFFKLNLDIGEIKKRPMEVV NTEVKPVIHSRINVSARFRKPLQEPCTIFLIANGDLINPASRLLIPRKTNLNWDHVLQM VTEKITLRSGAVHRLYTLLEGKLVESGAELENGQFYVAVGRDKFKKLPYGELLFDKST MRRPFGQKASSLPPIVGSRKSKGSGNDRHSKSTVGSSDNSSPQPLKRKGGKEDVN SEKLTCLKQNVKLNKNSQETIPNSDEGIFKAGAERSETRGAAEVQEDEDTQVEVPVDQ RPAEIVDEEEDGEKANKDAEQKEDFSGMNGDLEEEGGREATDAPEQVEEILDHSEQ

 Tel: 1-631-559-9269 1-516-512-3133

 Email: info@creative-biomart.com  Fax: 1-631-938-8127

 45-1 Ramsey Road, Shirley, NY 11967, USA

QARPARVNGGTDEENGEELQQVNNELQLVLDKERKSQGAGSGQDEADVDPQRPP
RPEVKITSPEENENNQQNKDYAAVA

Applications
Enzyme-linked Immunoabsorbent Assay
Western Blot (Recombinant protein)
Antibody Production
Protein Array

Notes Best use within three months from the date of receipt of this protein.

Storage Store at -80 centigrade. Aliquot to avoid repeated freezing and thawing.

Storage Buffer 50 mM Tris-HCl, 10 mM reduced Glutathione, pH=8.0 in the elution buffer.

GENE INFORMATION

Gene Name [DCDC2 doublecortin domain containing 2 \[Homo sapiens \]](#)

Official Symbol [DCDC2](#)

Synonyms DCDC2; doublecortin domain containing 2; doublecortin domain-containing protein 2; DCDC2A; KIAA1154; RU2; RU2S;

Gene ID [51473](#)

mRNA Refseq [NM_001195610](#)

Protein Refseq [NP_001182539](#)

MIM [605755](#)

 Tel: 1-631-559-9269 1-516-512-3133

 Email: info@creative-biomart.com  Fax: 1-631-938-8127

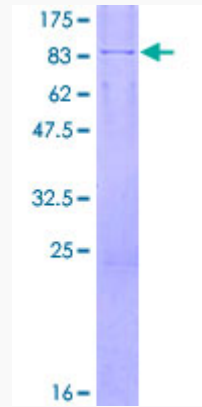
 45-1 Ramsey Road, Shirley, NY 11967, USA

UniProt ID


Q9UHG0

Quality Control

Testing:



12.5% SDS-PAGE Stained with Coomassie Blue.

 Tel: 1-631-559-9269 1-516-512-3133

 Email: info@creative-biomart.com  Fax: 1-631-938-8127

 45-1 Ramsey Road, Shirley, NY 11967, USA