

Recombinant Human DCLK1 Protein, GST-tagged

Cat. No. DCLK1-2383H Lot. No. (See product label)

SPECIFICATION

Product Overview Human DCAMKL1 partial ORF (NP_004725, 640 a.a. - 729 a.a.) recombinant protein with GST-tag at N-terminal.

Species Human

Source Wheat Germ

Description This gene encodes a member of the protein kinase superfamily and the doublecortin family. The protein encoded by this gene contains two N-terminal doublecortin domains, which bind microtubules and regulate microtubule polymerization, a C-terminal serine/threonine protein kinase domain, which shows substantial homology to Ca²⁺/calmodulin-dependent protein kinase, and a serine/proline-rich domain in between the doublecortin and the protein kinase domains, which mediates multiple protein-protein interactions. The microtubule-polymerizing activity of the encoded protein is independent of its protein kinase activity. The encoded protein is involved in several different cellular processes, including neuronal migration, retrograde transport, neuronal apoptosis and neurogenesis. This gene is up-regulated by brain-derived neurotrophic factor and associated with memory and general cognitive abilities. Multiple transcript variants generated by two alternative promoter usage and alternative splicing have been reported, but the full-length nature and biological validity of some variants have not been defined. These variants encode different isoforms, which are differentially expressed and have different kinase activities.[provided by RefSeq, Sep 2010]

 Tel: 1-631-559-9269 1-516-512-3133

 Email: info@creative-biomart.com  Fax: 1-631-938-8127

 45-1 Ramsey Road, Shirley, NY 11967, USA

Molecular Mass	35.53 kDa
AA Sequence	QVLEHPWVNDGLPENEHQLSVAGKIKKHFNTGPKPNSTAAGVSVIALDHGFTIKRS GSLDYYQQPGMYWIRPPLLIRRGFRFSDEDATRM
Applications	Enzyme-linked Immunoabsorbent Assay Western Blot (Recombinant protein) Antibody Production Protein Array
Notes	Best use within three months from the date of receipt of this protein.
Storage	Store at -80 centigrade. Aliquot to avoid repeated freezing and thawing.
Storage Buffer	50 mM Tris-HCl, 10 mM reduced Glutathione, pH=8.0 in the elution buffer.

GENE INFORMATION

Gene Name	DCLK1 doublecortin-like kinase 1 [Homo sapiens]
Official Symbol	DCLK1
Synonyms	DCLK1; doublecortin-like kinase 1; DCAMKL1, doublecortin and CaM kinase like 1; serine/threonine-protein kinase DCLK1; DCDC3A; DCLK; KIAA0369; doublecortin and CaM kinase-like 1; doublecortin-like and CAM kinase-like 1; doublecortin domain-containing protein 3A; CL1; CLICK1; DCAMKL1;
Gene ID	9201
mRNA Refseq	NM_001195415

 Tel: 1-631-559-9269 1-516-512-3133

 Email: info@creative-biomart.com  Fax: 1-631-938-8127

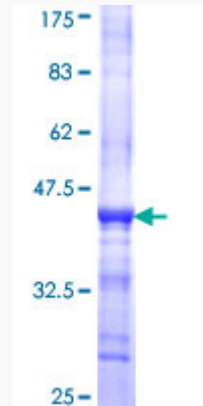
 45-1 Ramsey Road, Shirley, NY 11967, USA

Protein Refseq NP_001182344

MIM 604742

UniProt ID O15075

**Quality Control
Testing:**



12.5% SDS-PAGE Stained with Coomassie Blue.

 Tel: 1-631-559-9269 1-516-512-3133

 Email: info@creative-biomart.com  Fax: 1-631-938-8127

 45-1 Ramsey Road, Shirley, NY 11967, USA