

Recombinant Full Length Human DCLK1 Protein, C-Flag-tagged

Cat. No. DCLK1-723HFL Lot. No. (See product label)

SPECIFICATION

Product Overview	Recombinant Full Length Human DCLK1 Protein, fused to Flag-tag at C-terminus, was expressed in Mammalian cells.
Species	Human
Source	Mammalian Cells
Description	<p>This gene encodes a member of the protein kinase superfamily and the doublecortin family. The protein encoded by this gene contains two N-terminal doublecortin domains, which bind microtubules and regulate microtubule polymerization, a C-terminal serine/threonine protein kinase domain, which shows substantial homology to Ca²⁺/calmodulin-dependent protein kinase, and a serine/proline-rich domain in between the doublecortin and the protein kinase domains, which mediates multiple protein-protein interactions. The microtubule-polymerizing activity of the encoded protein is independent of its protein kinase activity. The encoded protein is involved in several different cellular processes, including neuronal migration, retrograde transport, neuronal apoptosis and neurogenesis. This gene is up-regulated by brain-derived neurotrophic factor and associated with memory and general cognitive abilities. Multiple transcript variants generated by two alternative promoter usage and alternative splicing have been reported, but the full-length nature and biological validity of some variants have not been defined. These variants encode different isoforms, which are differentially expressed and have different kinase activities.</p>

 Tel: 1-631-559-9269 1-516-512-3133

 Email: info@creative-biomart.com  Fax: 1-631-938-8127

 45-1 Ramsey Road, Shirley, NY 11967, USA

Form	25 mM Tris HCl, pH 7.3, 100 mM glycine, 10% glycerol.
Molecular Mass	80.9 kDa
AA Sequence	<p>MSFGRDMELEHFDERDKAQRYSRGRVNLPSPTSAHCSFYRTRTLQTLSSSEKK AKKVRFYRNGDRYFK GIVYAISPDRFRSFEALLADLTRLSDNVNLPQGVRTIYTIDG LKKISSLDQLVEGESYVCGSIEPFKKL EYTKNVNPNWSVNVKTTASASRAVSSLATAK GSPSEVRENKDFIRPKLVTIIRSGVKPRKAVRILLNKTA HSFEQVLTDITDAIKLDSG VVKRLYTLDGKQVMCLQDFFGDDDDIFIACGPEKFRYQDDFLLDESECRVVK STSYT KIASSRRSTTKSPGPSRRSKSPASTSSVNGTPGSQLSTPRSGKSPSPSPSPGSL RKQRSSQHG GSSTSLASTKVCSSMDENDGPGEEVSEEGFQIPATITERYKVGRTIG DGNFAVVKECVERSTAREYALKI IKKSKCRGKEHMIQNEVSILRRVKHPNIVLLIEEM DVPTELYLMELVKGGDLFDAITSTNKYTERDASG MLYNLASAIKYLHSLNIVHRDIK PENLLVYEHQDGSKSLKLGDFGLATIVDGPLYTVCGTPTYVAPEIIA ETGYGLKVDIW AAGVITYILLCGFPPFRGSGDDQEVLFDQILMGQVDFPSPYWDNVSDSAKELITMML LV DVDQRFSAVQVLEHPWVNDGGLPENEHQLSVAGKIKKHFNTGPKPNSTAAGVS VIALDHGFTIKRSGSLD YYQQPGMYWIRPPLLIRGRFSDEDATRMTRTRPLEQKLISEEDLAANDILDYKDDD DKV</p>
Purity	> 80% as determined by SDS-PAGE and Coomassie blue staining.
Stability	Stable for 12 months from the date of receipt of the product under proper storage and handling conditions. Avoid repeated freeze-thaw cycles.
Storage	Store at -80 centigrade.
Concentration	>50 ug/mL as determined by microplate BCA method.
Preparation	Recombinant protein was captured through anti-DDK affinity column followed by

 Tel: 1-631-559-9269 1-516-512-3133

 Email: info@creative-biomart.com  Fax: 1-631-938-8127

 45-1 Ramsey Road, Shirley, NY 11967, USA

conventional chromatography steps.

Protein Families Druggable Genome, Protein Kinase

Full Length Full L.

GENE INFORMATION

Gene Name DCLK1 doublecortin like kinase 1 [Homo sapiens (human)]

Official Symbol DCLK1

Synonyms CL1; DCLK; CLICK1; DCDC3A; DCAMKL1

Gene ID 9201

mRNA Refseq NM_004734.5

Protein Refseq NP_004725.1

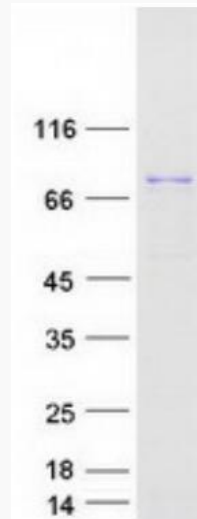
MIM 604742

UniProt ID O15075

 Tel: 1-631-559-9269 1-516-512-3133

 Email: info@creative-biomart.com  Fax: 1-631-938-8127

 45-1 Ramsey Road, Shirley, NY 11967, USA



Coomassie blue staining of purified DCLK1 protein.

 Tel: 1-631-559-9269 1-516-512-3133

 Email: info@creative-biomart.com  Fax: 1-631-938-8127

 45-1 Ramsey Road, Shirley, NY 11967, USA