

## Recombinant Human DCLK1 protein, GST-tagged

Cat. No. DCLK1-7843H Lot. No. (See product label)

### SPECIFICATION

**Product Overview** Recombinant Human DCLK1 protein(648-740 aa), fused with N-terminal GST tag, was expressed in E. coli.

**Species** Human

**Source** E.coli

**ProteinLength** 648-740 aa

**Form** The purified protein was Lyophilized from sterile PBS (58mM Na<sub>2</sub>HPO<sub>4</sub>, 17mM NaH<sub>2</sub>PO<sub>4</sub>, 68mM NaCl, pH8.). 5 % trehalose and 5 % mannitol are added as protectant before lyophilization. The elution buffer contain 100mM GSH.

**Storage** Short-term storage: Store at 2-8°C for (1-2 weeks). Long-term storage: Aliquot and store at -20°C to -80°C for up to 3 months, reconstitution with sterile water and addition of an equal volume of glycerol. Avoid repeat freeze-thaw cycles.

**Purity** 85%, by SDS-PAGE with Coomassie Brilliant Blue staining.

### GENE INFORMATION

**Official Symbol** [DCLK1](#)

**Synonyms** DCLK1; doublecortin-like kinase 1; DCAMKL1, doublecortin and CaM kinase like 1; serine/threonine-protein kinase DCLK1; DCDC3A; DCLK; KIAA0369; doublecortin

 Tel: 1-631-559-9269 1-516-512-3133

 Email: [info@creative-biomart.com](mailto:info@creative-biomart.com)  Fax: 1-631-938-8127

 45-1 Ramsey Road, Shirley, NY 11967, USA

and CaM kinase-like 1; doublecortin-like and CAM kinase-like 1; doublecortin domain-containing protein 3A; CL1; CLICK1; DCAMKL1;

**Gene ID** 9201

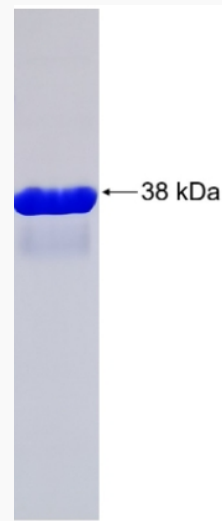
**mRNA Refseq** NM\_001195415

**Protein Refseq** NP\_001182344

**MIM** 604742

**UniProt ID** O15075

**SDS-PAGE**



 Tel: 1-631-559-9269 1-516-512-3133

 Email: [info@creative-biomart.com](mailto:info@creative-biomart.com)  Fax: 1-631-938-8127

 45-1 Ramsey Road, Shirley, NY 11967, USA