

Recombinant Human DCLRE1C Protein, GST-tagged

Cat. No. DCLRE1C-2396H Lot. No. (See product label)

SPECIFICATION

Product Overview Human DCLRE1C full-length ORF (AAH22254, 1 a.a. - 434 a.a.) recombinant protein with GST-tag at N-terminal.

Species Human

Source Wheat Germ

Description This gene encodes a nuclear protein that is involved in V(D)J recombination and DNA repair. The encoded protein has single-strand-specific 5'-3' exonuclease activity; it also exhibits endonuclease activity on 5' and 3' overhangs and hairpins. The protein also functions in the regulation of the cell cycle in response to DNA damage. Mutations in this gene can cause Athabaskan-type severe combined immunodeficiency (SCIDA) and Omenn syndrome. Alternative splicing results in multiple transcript variants. [provided by RefSeq, Jan 2014]

Molecular Mass 73.48 kDa

AA Sequence

```
MSSFEGQMAEYPTISIDRFDRENLRARAYFLSHCHKDHMKGLRAPTLKRRLECSLKV
YLYCSPVTKELLLTSPKYRFWKKRIISIEIETPTQISLVDEASGEKEEIVTLLPAGHCP
GSVMFLFQGNNGTVLYTGDFRLAQGEAARMELLHSGGRVKDIQSVYLDTTFC DPRF
YQIPSRRECLSGVLELVRSWITRSPYHVWLNCKAAYGYEYLFNTLSEELGVQVHVN
KLDMFRNMPEILRHLTTDRNTQIHACRHPKAE EYFQWSKLPCGITSRNRIPLHIISIKP
STMWFGERSRKTNVIVRTGESSYRACFSFHSSYSEIKDFLSYLCPVNAYPNVIPVGT
TMDKVVEILKPLCRSSQSTEPKYKPLGKLRARTVHRDSGSHSVTQARMRWCHHD
```

 Tel: 1-631-559-9269 1-516-512-3133

 Email: info@creative-biomart.com  Fax: 1-631-938-8127

 45-1 Ramsey Road, Shirley, NY 11967, USA

SLYPLTPGIKRSSCLSLLTSWITGAYRHAQLMI

Applications

Enzyme-linked Immunoabsorbent Assay
 Western Blot (Recombinant protein)
 Antibody Production
 Protein Array

Notes

Best use within three months from the date of receipt of this protein.

Storage

Store at -80 centigrade. Aliquot to avoid repeated freezing and thawing.

Storage Buffer

50 mM Tris-HCl, 10 mM reduced Glutathione, pH=8.0 in the elution buffer.

GENE INFORMATION

Gene Name

[DCLRE1C DNA cross-link repair 1C \[Homo sapiens \]](#)

Official Symbol

[DCLRE1C](#)

Synonyms

DCLRE1C; DNA cross-link repair 1C; DNA cross link repair 1C (PSO2 homolog, *S. cerevisiae*) , SCIDA, severe combined immunodeficiency, type a (Athabascan); protein artemis; A SCID; ARTEMIS; FLJ11360; PSO2 homolog (*S. cerevisiae*); SNM1C; PSO2 homolog; SNM1 homolog C; SNM1-like protein; DNA cross-link repair 1C protein; severe combined immunodeficiency, type a (Athabascan); DNA cross-link repair 1C (PSO2 homolog, *S. cerevisiae*); SCIDA; A-SCID; hSNM1C; RS-SCID; DCLREC1C; FLJ36438;

Gene ID

[64421](#)

mRNA Refseq

[NM_001033855](#)

 Tel: 1-631-559-9269 1-516-512-3133

 Email: info@creative-biomart.com  Fax: 1-631-938-8127

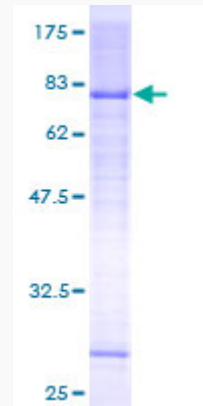
 45-1 Ramsey Road, Shirley, NY 11967, USA

Protein Refseq NP_001029027

MIM 605988

UniProt ID Q96SD1

**Quality Control
Testing:**



12.5% SDS-PAGE Stained with Coomassie Blue.

 Tel: 1-631-559-9269 1-516-512-3133

 Email: info@creative-biomart.com  Fax: 1-631-938-8127

 45-1 Ramsey Road, Shirley, NY 11967, USA