

## Recombinant Human DCN Protein, GST-tagged

**Cat. No.** DCN-2398H    **Lot. No.** (See product label)

### SPECIFICATION

<b>Product Overview</b>	Human DCN full-length ORF ( AAH05322, 1 a.a. - 359 a.a.) recombinant protein with GST-tag at N-terminal.
<b>Species</b>	Human
<b>Source</b>	Wheat Germ
<b>Description</b>	This gene encodes a member of the small leucine-rich proteoglycan family of proteins. Alternative splicing results in multiple transcript variants, at least one of which encodes a preproprotein that is proteolytically processed to generate the mature protein. This protein plays a role in collagen fibril assembly. Binding of this protein to multiple cell surface receptors mediates its role in tumor suppression, including a stimulatory effect on autophagy and inflammation and an inhibitory effect on angiogenesis and tumorigenesis. This gene and the related gene biglycan are thought to be the result of a gene duplication. Mutations in this gene are associated with congenital stromal corneal dystrophy in human patients. [provided by RefSeq, Nov 2015]
<b>Molecular Mass</b>	65.23 kDa
<b>AA Sequence</b>	MKATIILLLLLAQVSWAGPFQQRGLFDFMLEDEASGIGPEVPDDRDFEPSLGPVCPFR CQCHLRVVQCSDLGLDKVPKDLPPDTLLDLQNNKITEIKDGDGFKNLKLNHALILVNN KISKVSPGAFPLVKLERLYLSKNQLKELPEKMPKTLQELRAHENEITKVRKVTFNGL NQMIVIELGTNPLKSSGIENGAFQGMKKLSYIRIADTNITSIPQGLPPSLTELHLDGNKI

 Tel: 1-631-559-9269    1-516-512-3133

 Email: [info@creative-biomart.com](mailto:info@creative-biomart.com)     Fax: 1-631-938-8127

 45-1 Ramsey Road, Shirley, NY 11967, USA

SRVDAASLKGLNNLAKLGLSFNSISAVDNGSLANTPHLRELHLDNNKLTRVPGGLAE  
 HKYIQVVYLHNNNISVVGSSDFCPPGHNTKKASYSGVSLFSNPVQYWEIQPSTFRCV  
 YVRSAILGNYK

<b>Applications</b>	Enzyme-linked Immunoabsorbent Assay Western Blot (Recombinant protein) Antibody Production Protein Array
<b>Notes</b>	Best use within three months from the date of receipt of this protein.
<b>Storage</b>	Store at -80 centigrade. Aliquot to avoid repeated freezing and thawing.
<b>Storage Buffer</b>	50 mM Tris-HCl, 10 mM reduced Glutathione, pH=8.0 in the elution buffer.

## GENE INFORMATION

<b>Gene Name</b>	DCN decorin [ <i>Homo sapiens</i> ]
<b>Official Symbol</b>	DCN
<b>Synonyms</b>	DCN; decorin; decorin proteoglycan; DSPG2; SLRR1B; PG-S2; bone proteoglycan II; proteoglycan core protein; small leucine-rich protein 1B; dermatan sulphate proteoglycans II; CSCD; PG40; PGII; PGS2;
<b>Gene ID</b>	1634
<b>mRNA Refseq</b>	NM_001920
<b>Protein Refseq</b>	NP_001911

 Tel: 1-631-559-9269 1-516-512-3133

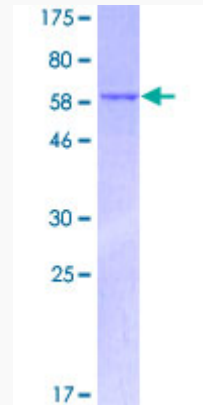
 Email: [info@creative-biomart.com](mailto:info@creative-biomart.com)  Fax: 1-631-938-8127

 45-1 Ramsey Road, Shirley, NY 11967, USA

**MIM** 125255

**UniProt ID** P07585

**Quality Control  
Testing:**



12.5% SDS-PAGE Stained with Coomassie Blue.

 Tel: 1-631-559-9269 1-516-512-3133

 Email: [info@creative-biomart.com](mailto:info@creative-biomart.com)  Fax: 1-631-938-8127

 45-1 Ramsey Road, Shirley, NY 11967, USA