

Recombinant Human DCP2 protein, His-tagged

Cat. No. DCP2-11861H Lot. No. (See product label)

SPECIFICATION

Product Overview	Recombinant Human DCP2 protein(Q8IU60)(1-385aa), fused with N-terminal His tag, was expressed in E.coli.
Species	Human
Source	E.coli
ProteinLength	1-385aa
Form	If the delivery form is liquid, the default storage buffer is Tris/PBS-based buffer, 5%-50% glycerol. If the delivery form is lyophilized powder, the buffer before lyophilization is Tris/PBS-based buffer, 6% Trehalose, pH 8.0.
Molecular Mass	48.4kDa
Purity	Greater than 90% as determined by SDS-PAGE.
Storage	Store at -20°C/-80°C upon receipt, aliquoting is necessary for multiple use. Avoid repeated freeze-thaw cycles.
Reconstitution	Please reconstitute protein in deionized sterile water to a concentration of 0.1-1.0 mg/mL. We recommend to add 5-50% of glycerol (final concentration) and aliquot for long-term storage at -20°C/-80°C. Our default final concentration of glycerol is 50%.

 Tel: 1-631-559-9269 1-516-512-3133

 Email: info@creative-biomart.com  Fax: 1-631-938-8127

 45-1 Ramsey Road, Shirley, NY 11967, USA

GENE INFORMATION

Gene Name DCP2 DCP2 decapping enzyme homolog (*S. cerevisiae*) [*Homo sapiens*]

Official Symbol DCP2

Synonyms DCP2; DCP2 decapping enzyme homolog (*S. cerevisiae*); mRNA-decapping enzyme 2; nudix (nucleoside diphosphate linked moiety X) type motif 20; NUDT20; hDpc; nudix (nucleoside diphosphate linked moiety X)-type motif 20; FLJ33245

Gene ID 167227

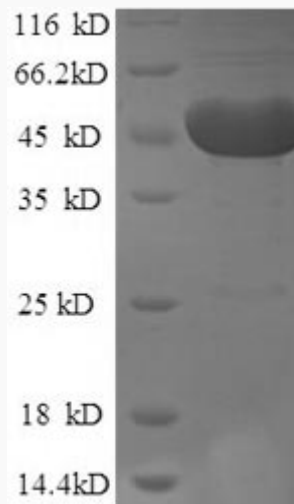
mRNA Refseq NM_001242377

Protein Refseq NP_001229306

MIM 609844

UniProt ID Q8IU60

SDS-PAGE



Tel: 1-631-559-9269 1-516-512-3133

Email: info@creative-biomart.com Fax: 1-631-938-8127

45-1 Ramsey Road, Shirley, NY 11967, USA