

## Recombinant Human DCP2 Protein (1-385 aa), His-tagged

Cat. No. DCP2-1690H Lot. No. (See product label)

### SPECIFICATION

<b>Product Overview</b>	Recombinant Human DCP2 Protein (1-385 aa) is produced by Yeast expression system. This protein is fused with a 6xHis tag at the N-terminal. Research Area: Transcription. Protein Description: Full Length of isoform 2.
<b>Species</b>	Human
<b>Source</b>	Yeast
<b>ProteinLength</b>	1-385 aa
<b>Description</b>	Decapping metalloenzyme that catalyzes the cleavage of the cap structure on mRNAs. Removes the 7-methyl guanine cap structure from mRNA molecules, yielding a 5'-phosphorylated mRNA fragment and 7m-GDP. Necessary for the degradation of mRNAs, both in normal mRNA turnover and in nonsense-mediated mRNA decay. Plays a role in replication-dependent histone mRNA degradation. Has higher activity towards mRNAs that lack a poly(A) tail. Has no activity towards a cap structure lacking an RNA moiety
<b>Form</b>	Tris-based buffer, 50% glycerol
<b>Molecular Mass</b>	46.4 kDa
<b>AA Sequence</b>	METKRVEIPGSVLDLCSR FILHIPSEERDN AIRVCFQIELAHWFYLD FYMQNTPGLP QCGIRDFAKAVFSHCPFLLPQGEDVEKVLDEWKEYKMGVPTYGAIILDETLENVLLV QGYLAKSGWGFPGKGVNKEEAPHDCAAREVFEETGFDIKDYICKDDYIELRINDQLA

 Tel: 1-631-559-9269 1-516-512-3133

 Email: [info@creative-biomart.com](mailto:info@creative-biomart.com)  Fax: 1-631-938-8127

 45-1 Ramsey Road, Shirley, NY 11967, USA

RLYIIPGIPKDTKFNPKTRREIRNIEWFSIEKLPCHRNDMTPKSKLGLAPNKFFMAIPFI  
 RPLRDWLSRRFGDSSSDSNGFSSTGSTPAKPTVEKLSRSTKFRHSQQLFDPDGSPGD  
 QWVKHRQPLQQKPYNNHSEMSDLLKGGKCEKKLHPRKLQDNFETDAVYDLPSSSE  
 DQLEHAEGQPVACNGHCKFPFSSRAFLSFKFDHNAIMKIDL

**Purity** > 90% as determined by SDS-PAGE.

**Notes** Repeated freezing and thawing is not recommended. Store working aliquots at 4 centigrade for up to one week.

**Storage** The shelf life is related to many factors, storage state, buffer ingredients, storage temperature and the stability of the protein itself. Generally, the shelf life of liquid form is 6 months at -20 centigrade/-80 centigrade. The shelf life of lyophilized form is 12 months at -20 centigrade/-80 centigrade.

**Concentration** A hardcopy of COA with reconstitution instruction is sent along with the products.

## GENE INFORMATION

**Gene Name** [DCP2 DCP2 decapping enzyme homolog \(S. cerevisiae\) \[ Homo sapiens \]](#)

**Official Symbol** [DCP2](#)

**Synonyms** DCP2; NUDT20; hDpc; FLJ33245;

**Gene ID** [167227](#)

**mRNA Refseq** [NM\\_001242377](#)

**Protein Refseq** [NP\\_001229306](#)

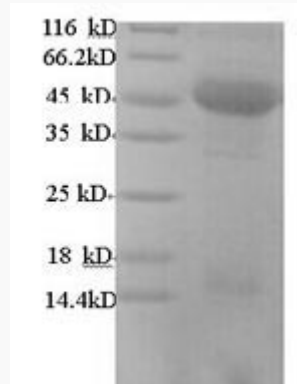
 Tel: 1-631-559-9269 1-516-512-3133

 Email: [info@creative-biomart.com](mailto:info@creative-biomart.com)  Fax: 1-631-938-8127

 45-1 Ramsey Road, Shirley, NY 11967, USA

MIM	609844
-----	--------

UniProt ID	Q8IU60
------------	--------



(Tris-Glycine gel) Discontinuous SDS-PAGE (reduced) with 5% enrichment gel and 15% separation gel.

 Tel: 1-631-559-9269 1-516-512-3133

 Email: [info@creative-biomart.com](mailto:info@creative-biomart.com)  Fax: 1-631-938-8127

 45-1 Ramsey Road, Shirley, NY 11967, USA