

## Recombinant Rat DCPS Protein, His-tagged

Cat. No. DCPS-1798R Lot. No. (See product label)

### SPECIFICATION

<b>Product Overview</b>	Recombinant Rat DCPS protein with a His-tag was expressed in E. coli
<b>Species</b>	Rat
<b>Source</b>	E.coli
<b>Description</b>	Predicted to enable RNA 7-methylguanosine cap binding activity; identical protein binding activity; and m7G(5')pppN diphosphatase activity. Predicted to be involved in cellular response to menadione; mRNA metabolic process; and negative regulation of programmed cell death. Predicted to be located in cytosol; mitochondrion; and nucleoplasm. Predicted to be active in P-body and nucleus. Orthologous to human DCPS (decapping enzyme, scavenger).
<b>Molecular Mass</b>	The protein has a calculated MW of 40.9 kDa.
<b>AA Sequence</b>	<p>MGSSHHHHHSSGLVPRGSHMADTAPQLKRKREQEAEAEATPSTEEKEAGVNG          TSAPVRLPFSGFRVQKVLRESARDKIIFLHGKVNEDSGDTHGEDAVVILEKTPFQVEH          VAQLLTGNPELKLQFSNDIYSTYNLFPPRHLSDIKTTVVYPASEKHLQKYMQRDLRLI          RETGDDYRSLTLPYLESQSLSIQWVYNILDKKAEADRIVFENPDPSDGFVLIPDLKWN          QQQLDDLYLIAICHRRGIRSLRDLTPEHLPLLRNILREGQEAILKRYQVTGDRLRVYLH          YLPSYYHLHVHFTALGFAPGSGVERAHLAEVIENTLECDPKHYQRRTLTFALRTDD          PLLQLLQKAQQP</p>
<b>Purity</b>	>90% by SDS-PAGE

 Tel: 1-631-559-9269 1-516-512-3133

 Email: [info@creative-biomart.com](mailto:info@creative-biomart.com)  Fax: 1-631-938-8127

 45-1 Ramsey Road, Shirley, NY 11967, USA



**Storage** Store it under sterile conditions at -20 to -80 centigrade. It is recommended that the protein be aliquoted for optimal storage. Avoid repeated freeze-thaw cycles.

**Concentration** 0.16 mg/mL

**Storage Buffer** 50mM Tris, 300mM NaCl, pH 8.0

## GENE INFORMATION

**Gene Name** Dcps decapping enzyme, scavenger [ *Rattus norvegicus* ]

**Official Symbol** Dcps

**Synonyms** DCPS; decapping enzyme, scavenger; scavenger mRNA-decapping enzyme DcpS; DCS-1; mRNA decapping enzyme; histidine triad protein member 5; hint-related 7meGMP-directed hydrolase; Hint-5; MGC124934;

**Gene ID** 266605

**mRNA Refseq** NM\_153302

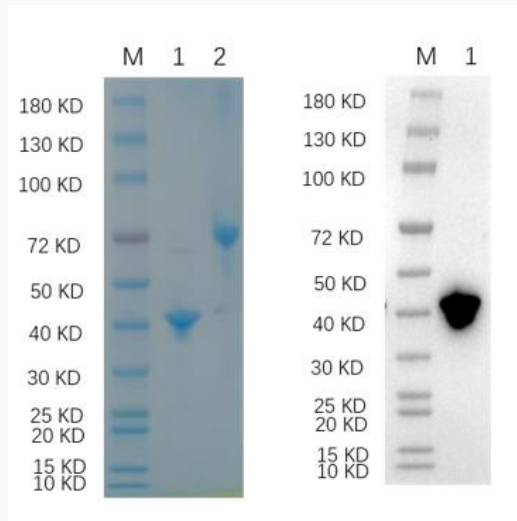
**Protein Refseq** NP\_695214

 Tel: 1-631-559-9269 1-516-512-3133

 Email: [info@creative-biomart.com](mailto:info@creative-biomart.com)  Fax: 1-631-938-8127

 45-1 Ramsey Road, Shirley, NY 11967, USA

**SDS-PAGE:**



Reducing 12% SDS-PAGE and WB analysis profile of purified Rat DCPS

1. Rat DCPS

2. BSA

 Tel: 1-631-559-9269 1-516-512-3133

 Email: [info@creative-biomart.com](mailto:info@creative-biomart.com)  Fax: 1-631-938-8127

 45-1 Ramsey Road, Shirley, NY 11967, USA