

Recombinant Human DCTD Protein, Myc/DDK-tagged, C13 and N15-labeled

Cat. No. DCTD-3317H **Lot. No.** (See product label)

SPECIFICATION

Product Overview	DCTD MS Standard C13 and N15-labeled recombinant protein (NP_001012750) with a C-terminal MYC/DDK tag, was expressed in HEK293 cells.
Species	Human
Source	HEK293
Description	The protein encoded by this gene catalyzes the deamination of dCMP to dUMP, the nucleotide substrate for thymidylate synthase. The encoded protein is allosterically activated by dCTP and inhibited by dTTP, and is found as a homohexamer. This protein uses zinc as a cofactor for its activity. Two transcript variants encoding different isoforms have been found for this gene.
Molecular Mass	20.8 kDa
AA Sequence	MVGGGQPCGPNMSEVSCCKRDDYLEWPEYFMAVAFLSAQRSKDPNSQVGACIVN SENKIVGIGYNGMPNGCSDDVLPWRRRTAENKLDTKYPYVCHAELNAIMNKNSTDVK GCSMYVALFPCNECAKLIQAGIKEVIFMSDKYHDSDEATAARLLFNMAGVTFRKFIP KCSKIVIDFDSINSRPSQKLQTRTRPLEQKLISEEDLAANDILDYKDDDDKV
Purity	> 80% as determined by SDS-PAGE and Coomassie blue staining
Stability	Stable for 3 months from receipt of products under proper storage and handling conditions.

 Tel: 1-631-559-9269 1-516-512-3133

 Email: info@creative-biomart.com  Fax: 1-631-938-8127

 45-1 Ramsey Road, Shirley, NY 11967, USA

Storage	Store at -80 centigrade. Avoid repeated freeze-thaw cycles.
----------------	---

Concentration	50 µg/mL as determined by BCA
----------------------	-------------------------------

Storage Buffer	100 mM glycine, 25 mM Tris-HCl, pH 7.3.
-----------------------	---

GENE INFORMATION

Gene Name	DCTD dCMP deaminase [Homo sapiens (human)]
------------------	--

Official Symbol	DCTD
------------------------	------

Synonyms	DCTD; dCMP deaminase; deoxycytidylate deaminase; MGC111062;
-----------------	---

Gene ID	1635
----------------	------

mRNA Refseq	NM_001012732
--------------------	--------------

Protein Refseq	NP_001012750
-----------------------	--------------

MIM	607638
------------	--------

UniProt ID	P32321
-------------------	--------

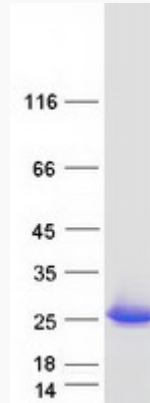
 Tel: 1-631-559-9269 1-516-512-3133

 Email: info@creative-biomart.com  Fax: 1-631-938-8127

 45-1 Ramsey Road, Shirley, NY 11967, USA



SDS-PAGE



Tel: 1-631-559-9269 1-516-512-3133

Email: info@creative-biomart.com Fax: 1-631-938-8127

45-1 Ramsey Road, Shirley, NY 11967, USA