

Recombinant Human DCUN1D3 Protein, GST-tagged

Cat. No. DCUN1D3-2420H Lot. No. (See product label)

SPECIFICATION

Product Overview	Human DCUN1D3 full-length ORF (NP_775746.1, 1 a.a. - 304 a.a.) recombinant protein with GST-tag at N-terminal.
Species	Human
Source	Wheat Germ
Description	DCUN1D3 (Defective In Cullin Neddylation 1 Domain Containing 3) is a Protein Coding gene. An important paralog of this gene is DCUN1D2.
Molecular Mass	60.7 kDa
AA Sequence	<p>MGQCVTKCKNPSSTLGSKNGDREPSNKSHSRRGAGHREEQVPPCGKPGGDILVN GTKKAEAAATEACQLPTSSGDAGRESKSNAEESLQRLEELFRRYKDEREDAILEEG MERFCNDLCVDPTEFRVLLLAWKFQAATMCKFTRKEFFDGCKAISADSIDGICARFP SLLTEAKQEDKFKDLYRFTFQFGLDSEEGQRSLHREIAIALWKLVFTQNNPPVLDQW LNFLTENPSGIKISRDTWNMFLNFTQVIGPDLSEDEAWPSLFDTFVEWEMER RKREGEGRGALSSGPEGLCPEEQT</p>
Applications	Enzyme-linked Immunoabsorbent Assay Western Blot (Recombinant protein) Antibody Production Protein Array
Notes	Best use within three months from the date of receipt of this protein.

 Tel: 1-631-559-9269 1-516-512-3133

 Email: info@creative-biomart.com  Fax: 1-631-938-8127

 45-1 Ramsey Road, Shirley, NY 11967, USA

Storage Store at -80 centigrade. Aliquot to avoid repeated freezing and thawing.

Storage Buffer 50 mM Tris-HCl, 10 mM reduced Glutathione, pH=8.0 in the elution buffer.

GENE INFORMATION

Gene Name DCUN1D3 DCN1, defective in cullin neddylation 1, domain containing 3 (*S. cerevisiae*) [*Homo sapiens*]

Official Symbol DCUN1D3

Synonyms DCUN1D3; DCN1, defective in cullin neddylation 1, domain containing 3 (*S. cerevisiae*); DCN1-like protein 3; DKFZp686O0290; FLJ41725; MGC48972; DCUN1 domain-containing protein 3; defective in cullin neddylation protein 1-like protein 3; 44M2.4; DKFZp686G23203;

Gene ID 123879

mRNA Refseq NM_173475

Protein Refseq NP_775746

MIM 616167

UniProt ID Q8IWE4

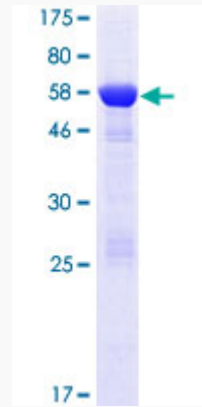
 Tel: 1-631-559-9269 1-516-512-3133

 Email: info@creative-biomart.com  Fax: 1-631-938-8127

 45-1 Ramsey Road, Shirley, NY 11967, USA

Quality Control

Testing:



12.5% SDS-PAGE Stained with Coomassie Blue.

 Tel: 1-631-559-9269 1-516-512-3133

 Email: info@creative-biomart.com  Fax: 1-631-938-8127

 45-1 Ramsey Road, Shirley, NY 11967, USA