

# Recombinant Full Length Human DDR1 Protein, C-Flag-tagged

**Cat. No.** DDR1-1331HFL    **Lot. No.** (See product label)

## SPECIFICATION

<b>Product Overview</b>	Recombinant Full Length Human DDR1 Protein, fused to Flag-tag at C-terminus, was expressed in Mammalian cells.
<b>Species</b>	Human
<b>Source</b>	Mammalian Cells
<b>Description</b>	Receptor tyrosine kinases play a key role in the communication of cells with their microenvironment. These kinases are involved in the regulation of cell growth, differentiation and metabolism. The protein encoded by this gene belongs to a subfamily of tyrosine kinase receptors with homology to Dictyostelium discoideum protein discoidin I in their extracellular domain, and that are activated by various types of collagen. Expression of this protein is restricted to epithelial cells, particularly in the kidney, lung, gastrointestinal tract, and brain. In addition, it has been shown to be significantly overexpressed in several human tumors. Alternatively spliced transcript variants encoding different isoforms have been described for this gene.
<b>Form</b>	25 mM Tris HCl, pH 7.3, 100 mM glycine, 10% glycerol.
<b>Molecular Mass</b>	100.9 kDa
<b>AA Sequence</b>	MGPEALSSLLLLLVASGDADMKGHFDPKCRYALGMQDRTIPDSDISASSSWSDS TAARHSRLESSDGD GAWCPAGSVFPKEEYLVQVDLQRLHLVALVGTQGRHAGGL GKEFSRSYRLRYSRDGRRWGMGWKDRWGQEV ISGNEDPEGVVLKDLGPPMVARL VRFYPRADRVMSVCLRVELYGCLWRDGLLSYAPVGGQTMYLSEAVYL NDSTYDGH

 Tel: 1-631-559-9269    1-516-512-3133

 Email: [info@creative-biomart.com](mailto:info@creative-biomart.com)     Fax: 1-631-938-8127

 45-1 Ramsey Road, Shirley, NY 11967, USA



TVGGLQYGGLGQLADGVVGLDDFRKSQELRVWPGYDYVGVWSNHSFSSGYVEMEF  
EFDRLRAF QAMQVHCNNMHTLGARLPGGVECFRRGPAMAWEGEPMRHNLGGN  
LGDPRARAVSVPLGGRVARFLQCRF LFAGPWLLFSEISFISDVVNNSSPALGGTFPP  
APWWPPGPPPTNFSSLELEPRGQQPVAKAEGSPTAILI GCLVAIIIIIIIIALMLWRL  
HWRRLLSKAERRVLEEEELTVHLSVPGDTILINNRPGPREPPPYQEPRPR GNPPHSA  
PCVPNGSALLSNPAYRLLLATYARPPRGPPTPAWAKPTNTQAYSGDYMEPEKP  
GAPLLPP PPQNSVPHYAEADIVTLQGVTGGNTYAVPALPPGAVGDGPPRVDFPRS  
RLRFKEKLGEGQFGEVHLCEVD SPQDLVSLDFPLNVRKGHPLLVAVKILRPDATKN  
ARNDFLKEVKIMSRLKDPNIIRLLGVCVQDDPLCFMI TDYMENGDNLQFLSAHQLEDK  
AAEGAPGDGQAAQGPTISYPMLLHVAQAQIASGMRYLATLNFVHRDLATR NCLVGEN  
FTIKIADFGMSRNLVYAGDYRVQGRAVLPIRWMAWECILMGKFTTASDVWAFGVTL  
WEVLMC RAQPFQQLTDEQVIENAGEFFRDQGRQVYLSRPPACQGLYELMLRC  
WSRESEQRPPFSQLHRFLAEDAL  
NTVTRTRPLEQKLISEEDLAANDILDYKDDDDKV

<b>Purity</b>	> 80% as determined by SDS-PAGE and Coomassie blue staining.
<b>Stability</b>	Stable for 12 months from the date of receipt of the product under proper storage and handling conditions. Avoid repeated freeze-thaw cycles.
<b>Storage</b>	Store at -80 centigrade.
<b>Concentration</b>	>50 ug/mL as determined by microplate BCA method.
<b>Preparation</b>	Recombinant protein was captured through anti-DDK affinity column followed by conventional chromatography steps.
<b>Protein Families</b>	Druggable Genome, Protein Kinase, Transmembrane
<b>Full Length</b>	Full L.

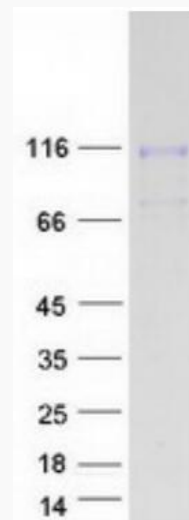
Tel: 1-631-559-9269 1-516-512-3133

Email: [info@creative-biomart.com](mailto:info@creative-biomart.com) Fax: 1-631-938-8127

45-1 Ramsey Road, Shirley, NY 11967, USA

## GENE INFORMATION

<b>Gene Name</b>	DDR1 discoidin domain receptor tyrosine kinase 1 [ Homo sapiens (human) ]
<b>Official Symbol</b>	DDR1
<b>Synonyms</b>	CAK; DDR; NEP; HGK2; PTK3; RTK6; TRKE; CD167; EDDR1; MCK10; NTRK4; PTK3A
<b>Gene ID</b>	780
<b>mRNA Refseq</b>	NM_001954.5
<b>Protein Refseq</b>	NP_001945.3
<b>MIM</b>	600408
<b>UniProt ID</b>	Q08345



 Tel: 1-631-559-9269 1-516-512-3133

 Email: [info@creative-biomart.com](mailto:info@creative-biomart.com)  Fax: 1-631-938-8127

 45-1 Ramsey Road, Shirley, NY 11967, USA



Coomassie blue staining of purified DDR1 protein.

 Tel: 1-631-559-9269 1-516-512-3133

 Email: [info@creative-biomart.com](mailto:info@creative-biomart.com)  Fax: 1-631-938-8127

 45-1 Ramsey Road, Shirley, NY 11967, USA