

## Recombinant Human DDR1 protein, rFc-tagged

Cat. No. DDR1-3791H Lot. No. (See product label)

### SPECIFICATION

<b>Product Overview</b>	Recombinant Human DDR1 protein(Q08345-1)(Asp21-Thr416), fused with C-terminal rFc tag, was expressed in HEK293.
<b>Species</b>	Human
<b>Source</b>	HEK293
<b>Form</b>	Lyophilized from 0.22 µm filtered solution in PBS, pH 7.4. Normally 5% trehalose and 5% mannitol are added as protectants before lyophilization.
<b>Molecular Mass</b>	70.2 kDa
<b>Endotoxin</b>	<0.1 EU/µg protein, LAL method
<b>Purity</b>	>90 %, SDS-PAGE
<b>Storage</b>	It is recommended that the protein be aliquoted for optimal storage. Avoid repeated freeze-thaw cycles. Until expiry date, -20°C to -80°C as lyophilized proteins. 3 months, -20°C to -80°C under sterile conditions after reconstitution.
<b>Reconstitution</b>	Briefly centrifuge the tube before opening. Reconstitute at 0.1-0.5 mg/mL in sterile water.

### GENE INFORMATION

 Tel: 1-631-559-9269 1-516-512-3133

 Email: [info@creative-biomart.com](mailto:info@creative-biomart.com)  Fax: 1-631-938-8127

 45-1 Ramsey Road, Shirley, NY 11967, USA

<b>Gene Name</b>	DDR1 discoidin domain receptor tyrosine kinase 1 [ Homo sapiens ]
<b>Official Symbol</b>	DDR1
<b>Synonyms</b>	DDR1; discoidin domain receptor tyrosine kinase 1; CAK, discoidin domain receptor family, member 1 , EDDR1, NEP, NTRK4, PTK3A; epithelial discoidin domain-containing receptor 1; CD167; RTK6; tyrosine kinase DDR; cell adhesion kinase; mammary carcinoma kinase 10; tyrosine-protein kinase CAK; protein-tyrosine kinase RTK-6; neuroepithelial tyrosine kinase; PTK3A protein tyrosine kinase 3A; CD167 antigen-like family member A; neurotrophic tyrosine kinase, receptor, type 4; CAK; DDR; NEP; HGK2; PTK3; TRKE; EDDR1; MCK10; NTRK4; PTK3A;
<b>Gene ID</b>	780
<b>mRNA Refseq</b>	NM_001202521
<b>Protein Refseq</b>	NP_001189450
<b>MIM</b>	600408
<b>UniProt ID</b>	Q08345

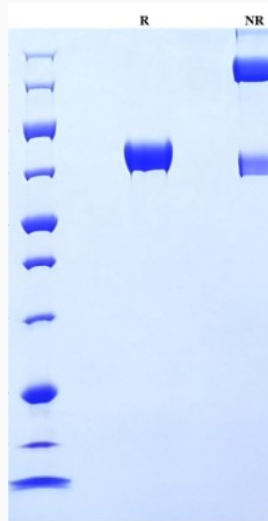
 Tel: 1-631-559-9269 1-516-512-3133

 Email: [info@creative-biomart.com](mailto:info@creative-biomart.com)  Fax: 1-631-938-8127

 45-1 Ramsey Road, Shirley, NY 11967, USA



SDS-PAGE



Tel: 1-631-559-9269 1-516-512-3133

Email: [info@creative-biomart.com](mailto:info@creative-biomart.com) Fax: 1-631-938-8127

45-1 Ramsey Road, Shirley, NY 11967, USA