

Recombinant Human DDR1 protein, His-tagged

Cat. No. DDR1-5165H Lot. No. (See product label)

SPECIFICATION

Product Overview	Recombinant Human DDR1 protein(NP_001945.3) (Met 1-Thr 416) was expressed in HEK293, with a C-terminal polyhistidine tag.
Species	Human
Source	HEK293
ProteinLength	1-416 aa
Form	Lyophilized from sterile PBS, pH 7.4.
Molecular Mass	The recombinant human DDR1 consists of 409 amino acids and has a calculated molecular mass of 45.7 kDa. The apparent molecular mass of rh DDR1 is approximately 55-60 kDa in SDS-PAGE under reducing conditions due to glycosylation.
Endotoxin	< 1.0 EU per µg of the protein as determined by the LAL method.
Purity	> 97 % as determined by SDS-PAGE
Storage	Store it under sterile conditions at -20°C to -80°C upon receiving. Recommend to aliquot the protein into smaller quantities for optimal storage. Avoid repeated freeze-thaw cycles.
Reconstitution	It is recommended that sterile water be added to the vial to prepare a stock solution of

 Tel: 1-631-559-9269 1-516-512-3133

 Email: info@creative-biomart.com  Fax: 1-631-938-8127

 45-1 Ramsey Road, Shirley, NY 11967, USA

0.2 ug/ul. Centrifuge the vial at 4°C before opening to recover the entire contents.

GENE INFORMATION

Gene Name [DDR1 discoidin domain receptor tyrosine kinase 1 \[Homo sapiens \]](#)

Official Symbol [DDR1](#)

Synonyms

DDR1; discoidin domain receptor tyrosine kinase 1; CAK, discoidin domain receptor family, member 1 , EDDR1, NEP, NTRK4, PTK3A; epithelial discoidin domain-containing receptor 1; CD167; RTK6; tyrosine kinase DDR; cell adhesion kinase; mammary carcinoma kinase 10; tyrosine-protein kinase CAK; protein-tyrosine kinase RTK-6; neuroepithelial tyrosine kinase; PTK3A protein tyrosine kinase 3A; CD167 antigen-like family member A; neurotrophic tyrosine kinase, receptor, type 4; CAK; DDR; NEP; HGK2; PTK3; TRKE; EDDR1; MCK10; NTRK4; PTK3A;

Gene ID [780](#)

mRNA Refseq [NM_001202521](#)

Protein Refseq [NP_001189450](#)

MIM [600408](#)

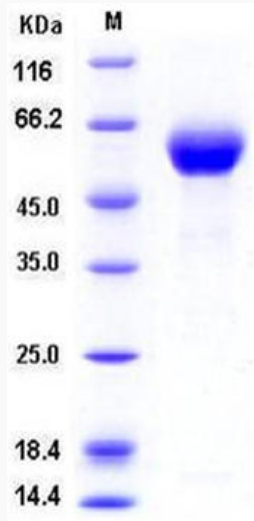
UniProt ID [Q08345](#)

 Tel: 1-631-559-9269 1-516-512-3133

 Email: info@creative-biomart.com  Fax: 1-631-938-8127

 45-1 Ramsey Road, Shirley, NY 11967, USA

SDS-PAGE



 Tel: 1-631-559-9269 1-516-512-3133

 Email: info@creative-biomart.com  Fax: 1-631-938-8127

 45-1 Ramsey Road, Shirley, NY 11967, USA